

MAGAIN



26 Leila Street BEDFORD PARK SA

5 2 2

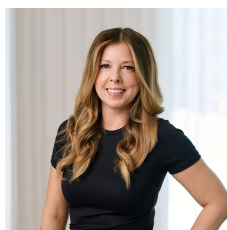
Please contact Mike Dobbin or Zoe Ball for inspection details.

Architecturally built in 2006, this stunning two storey stone fronted home is sure to wow any buyers that come through the doors. The huge 312sqm floor plan offers two large open plan living areas, five bedrooms, workshop plus two balconies with stunning views over the Sturt River valley, be prepared to fall in love. Ideally located close by to Flinders Medical centre and Flinders University it is perfect for those looking to live close by to work.

Split over two levels, the main entrance is on the top floor, there is a huge master bedroom with bay window, ceiling fan, large walk in robe and a modern ensuite. Making great

[For full version visit the website](https://www.magain.com.au/property/26-leila-street-bedford-park-sa/8436709)

Type : House
Building Size : 34 sqm
Land Size : 710 sqm
View : <https://www.magain.com.au/property/26-leila-street-bedford-park-sa/8436709>



Zoe Ball
08 8381 6000

<https://www.magain.com.au>
Magain Real Estate

Shop 15, Woodcroft Market Plaza, 217 Pimpala Road W
08 8381 6000



LOWER LEVEL



UPPER LEVEL