

MAGAIN



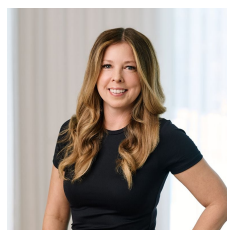
22 Riesling Avenue REYNELLA EAST SA

4  2  2 

This 2000 built quality Rossdale home offers an exceptionally large and functional floor plan for any growing family. With a huge list of features and extras that will impress the most fastidious buyers.

Beautifully presented inside & out and offering 4 unusually large bedrooms, three with built in robes and master with a huge ensuite bathroom, formal lounge & dining room featuring decorative ceiling roses & cornicing and timber balustrade. Towards the rear of the home is the semi separated family room and meals area overlooked by the high breakfast bar of the kitchen, which features a new dishwasher, a walk in pantry and plenty of under bench cupboards.

Type : House
Building Size : 27 sqm
View : <https://www.magain.com.au/property/22-riesling-avenue-reynella-east-sa/843672>
4



Zoe Ball
08 8381 6000

[For full version visit the website](https://www.magain.com.au)

<https://www.magain.com.au>
Magain Real Estate

Shop 15, Woodcroft Market Plaza, 217 Pimpala Road W
08 8381 6000

