

MAGAIN



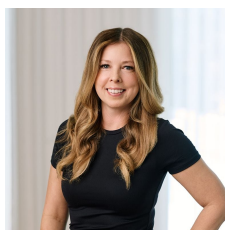
29A Osterley Terrace SEACLIFF PARK SA

3 1

If you have been looking for a change of scenery with a move closer to the coast, look no further. Situated in this well held suburb, this attractive and affordable home is the ideal property for those looking to get into the market at entry level. Oozing character & style, this solid brick beauty offers feature stone chimney, Jarrah timber floors and decorative ceilings as well as a fresh paint job throughout. The low maintenance yard and close proximity to the beach it is perfect for young professionals or anyone looking to enjoy a relaxed coastal lifestyle.

Offering three good size bedrooms, two with robes & ceiling fans, a large light filled formal lounge room with feature fireplace, formal dining area, second family room towards the rear of the home and a large 'eat in' style

Type : House
View : <https://www.magain.com.au/property/29a-osterley-terrace-seacliff-park-sa/8436729>



Zoe Ball
08 8381 6000

[For full version visit the website](https://www.magain.com.au)

<https://www.magain.com.au>
Magain Real Estate

Shop 15, Woodcroft Market Plaza, 217 Pimpala Road W
08 8381 6000

29 Osterley Seacliff Park, South Australia.



Picture intended as a reference only. Any specific measurements required should be obtained by an independent surveyor.