

# MAGAIN



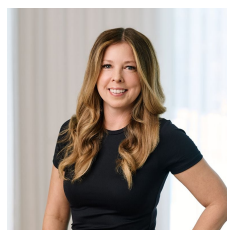
## 21 Light Road COROMANDEL VALLEY SA

4 🛏 2 🚿 2 🚗

Offering the character of yesteryear but with all the mod cons, this gorgeous home sits on a generous 1,121 sqm block. If you looking to please the whole family - this is the one!

Situated in this picturesque suburb, surrounded by other quality homes, this family friendly property will impress the most fastidious of buyers. Featuring a functional floorplan that consists of four bedrooms, master with ensuite and walk in robe, separate formal lounge and dining room, complete with high feature ceilings, cornices and archways. The open plan family room, with large picture windows, take advantage of the beautiful outlook and is adjacent to the timber kitchen with new stainless steel appliances, dishwasher and handy double fridge space. With ducted

**Type** : House  
**Building Size** : 22 sqm  
**View** : <https://www.magain.com.au/property/21-light-road-coromandel-valley-sa/8436777>



**Zoe Ball**  
08 8381 6000

[For full version visit the website](https://www.magain.com.au)

<https://www.magain.com.au>  
Magain Real Estate

Shop 15, Woodcroft Market Plaza, 217 Pimpala Road W  
08 8381 6000

