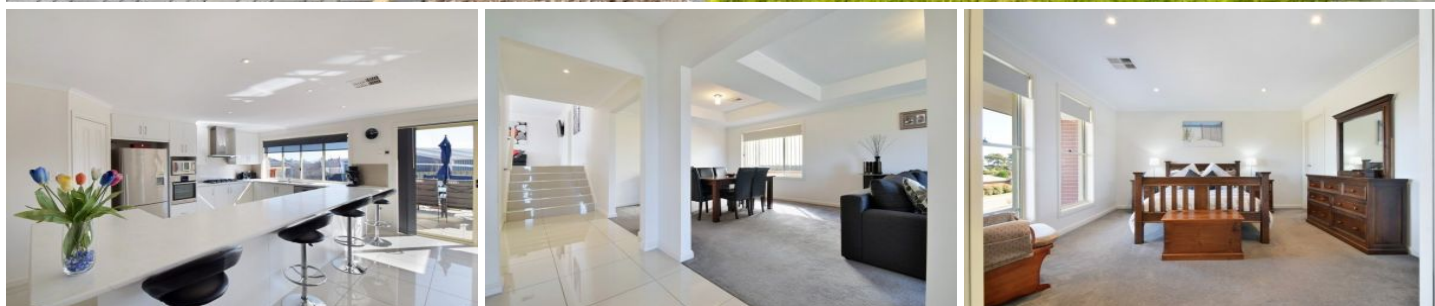


MAGAIN



3 Highfield Drive ABERFOYLE PARK SA

4 2 6

Please contact Andrew Boswell for viewing times.

Set on a commanding and prominent position overlooking the coast and tree studded horizon, this mighty house is highly recommended if you require more room. Built in 2010 by Hickinbotham Homes, this first time on the market property is set for living and complete with a harvest of features.

Upon entry to the home into the large tiled hallway you immediately get the feeling of space. With vaulted ceilings in the lounge and dining room and the big master bedroom complete with walk in robe and ensuite with corner spa bath, floor to ceiling tiling, his and hers vanity and temperature controlled hot water. Both the master bedroom

Type : House
Building Size : 31 sqm
Land Size : 833 sqm
View : <https://www.magain.com.au/property/3-highfield-drive-aberfoyle-park-sa/8436800>



Andrew Boswell
08 8381 6000

[For full version visit the website](https://www.magain.com.au)

3 Highfield Drive Aberfoyle Park, South Australia.



Picture intended as a reference only. Any specific measurements required should be obtained by an independent surveyor.