

MAGAIN



225 O'Sullivan Beach Road MORPHETT VALE SA

3 2 3

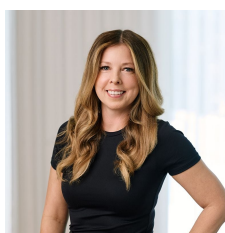
Set on a large 740sqm block this solid brick home presents a great opportunity to renovate or re-develop (stcc). Close by to local shops, schools and handy to the southern expressway it offers a great location for families or couples.

The original home offers three bedrooms, two with robes, formal lounge & dining with gas heating, centralised kitchen with servery & picture window, large family/rumpus room with cathedral ceilings & wood combustion heater, built in bar plus laundry with second toilet & shower. There is also ducted evaporative cooling.

Outside the home is a lockup carport through to a large entertaining area with access through to a large shed with concrete floor and a service pit. There is a paved courtyard

[For full version visit the website](#)

Type : House
Building Size : 17 sqm
Land Size : 741 sqm
View : <https://www.magain.com.au/property/225-osullivan-beach-road-morphett-vale-sa/8436804>



Zoe Ball
08 8381 6000

225 O'Sullivan Beach Road Morphett Vale, South Australia.



Picture intended as a reference only. Any specific measurements required should be obtained by an independent surveyor.