

MAGAIN



23 Topaz Drive FLAGSTAFF HILL SA

3  1  1 

Please contact Andrew Boswell for further details.

Perfect starter, downsizer or investment. The location is just ideal; quiet, close to local parks, playgrounds and walks and only a very short drive to Schools, Hub Shopping Centre and Westfield Marion. Attractive street appeal, this home has had some of the major updates done over the years which means you can move straight in. Need a big workshop? Then look at this one. Although its not drive-thru, it offers a great area for storage, home gym or man-cave. Options galore.

Features of this home include;

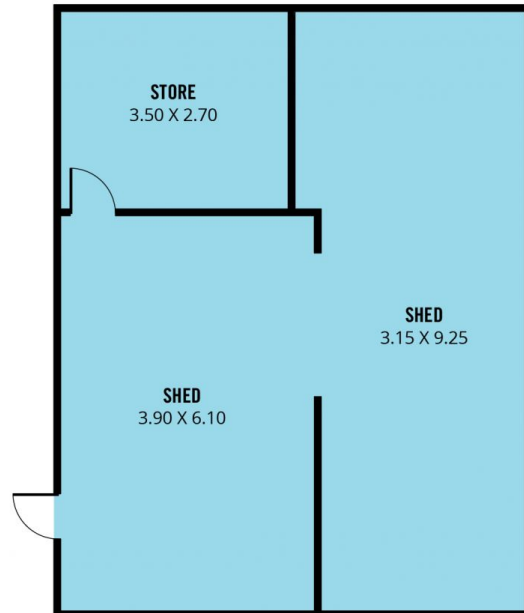
- Lounge room with floating floors, casual meals/study nook
- Open plan updated kitchen with gas cooker and dishwasher/meals/family
- Large master with ceiling fan and mirrored robes

[For full version visit the website](https://www.magain.com.au/property/23-topaz-drive-flagstaff-hill-sa/8436819)

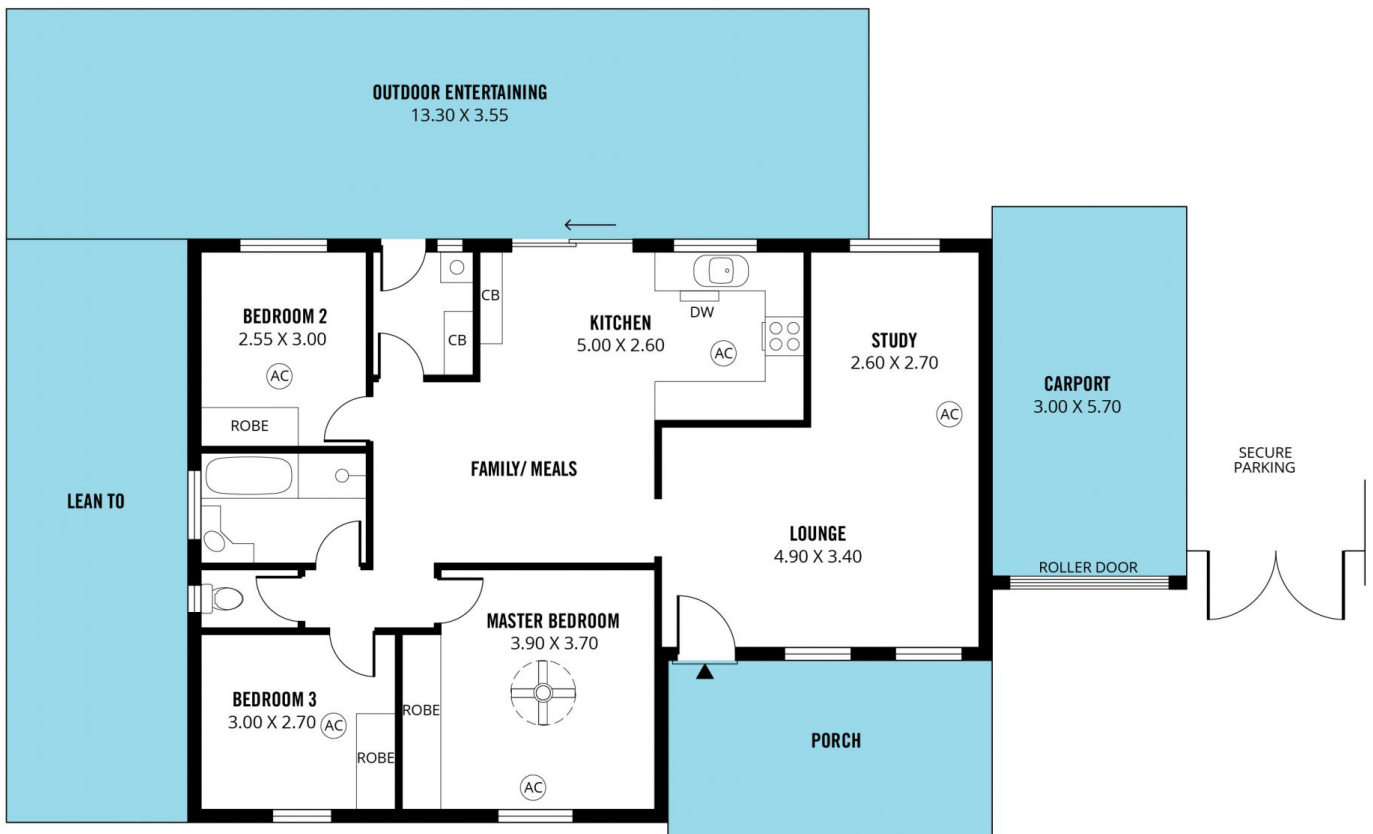
Type : House
Building Size : 11 sqm
Land Size : 651 sqm
View : <https://www.magain.com.au/property/23-topaz-drive-flagstaff-hill-sa/8436819>



Andrew Boswell
08 8381 6000



RWT



Scale in metres. This drawing is for illustration purposes only. All measurements are approximate and details intended to be relied upon should be independently verified.

Produced by **The Fotobase Group**