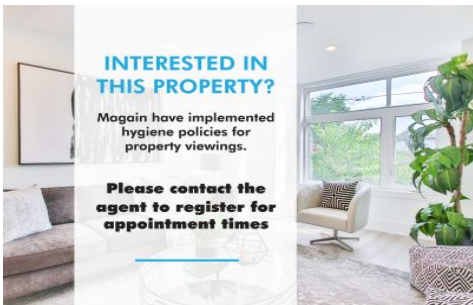


MAGAIN






INTERESTED IN THIS PROPERTY?

Magain have implemented hygiene policies for property viewings.

Please contact the agent to register for appointment times



24 Ipari Terrace MORPHETT VALE SA

3  1  1 

This attractive and affordable home will be sure to impress. Handy to local schools, shops and most amenities, it offers a great beginning for the lucky new owners with a host of added extras.

The functional floorplan consists of 3 good sized bedrooms, each fitted with carpet flooring and large built in robes. This home is serviced by the main bathroom complete with quality fittings including bathtub and vanity with a separate toilet for convenience.

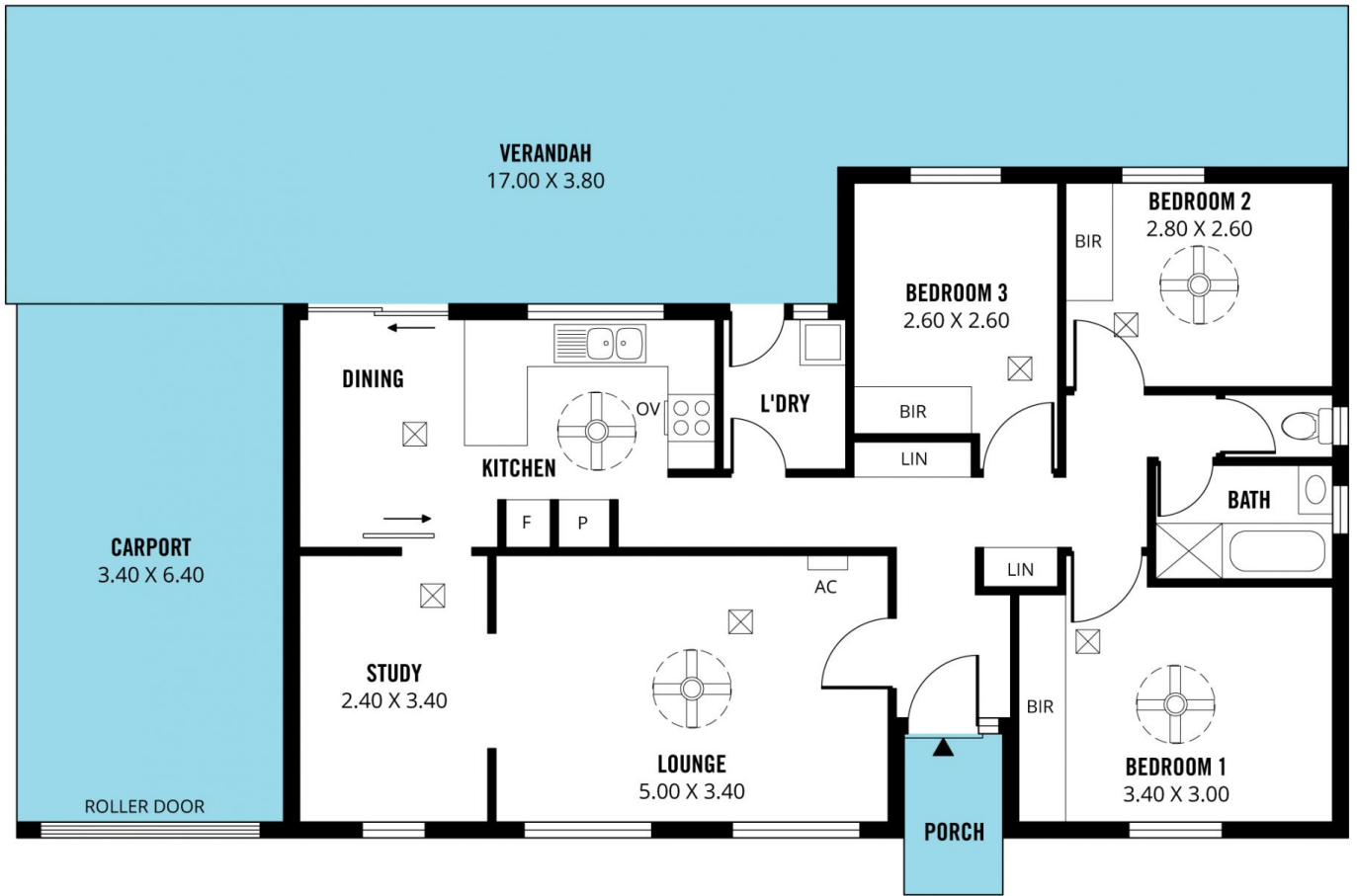
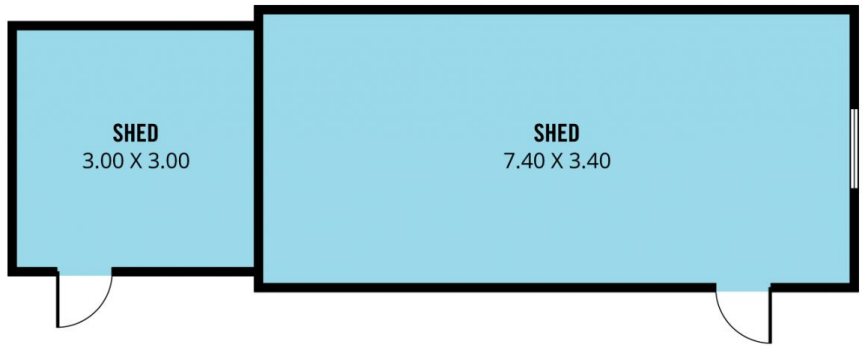
The updated kitchen features electric oven and cook-top and is also equipped with ample cupboard storage. This home offers separate formal lounge and dining areas perfect for the whole family to enjoy.

[For full version visit the website](https://www.magain.com.au/property/24-ipari-terrace-morphett-vale-sa/8436840)

Type : House
Building Size : 13 sqm
Land Size : 698 sqm
View : <https://www.magain.com.au/property/24-ipari-terrace-morphett-vale-sa/8436840>



Scott McPharlin
08 8382 0029



Scale in metres. This drawing is for illustration purposes only. All measurements are approximate and details intended to be relied upon should be independently verified.

Produced by The Fotobase Group