

MAGAIN



16 Jaimey Grove ABERFOYLE PARK SA

4  2  2 

When location matters and a quiet one at that, this family orientated home offers all that you need today to start living in this convenient position in Aberfoyle Park.

Located on easy care grounds both back and front, the home itself has four bedrooms, large master with ensuite and WIR, three other rooms at the rear of the home and big second bedroom. These are serviced by the main bathroom and separate toilet and linen cupboard. Front formal lounge/meals with feature combustion heater, ducted reverse cycle air con throughout the home, nicely appointed functional kitchen-lots of preparation area and with dishwasher, gas cook top and upgraded electric wall oven and pantry. Overlooking the roomy family area with gas wall space heater and entry to your large paved undercover verandah with cafe blinds taking in the views of

Type : House
Building Size : 19 sqm
View : <https://www.magain.com.au/property/16-jaimey-grove-aberfoyle-park-sa/8436856>

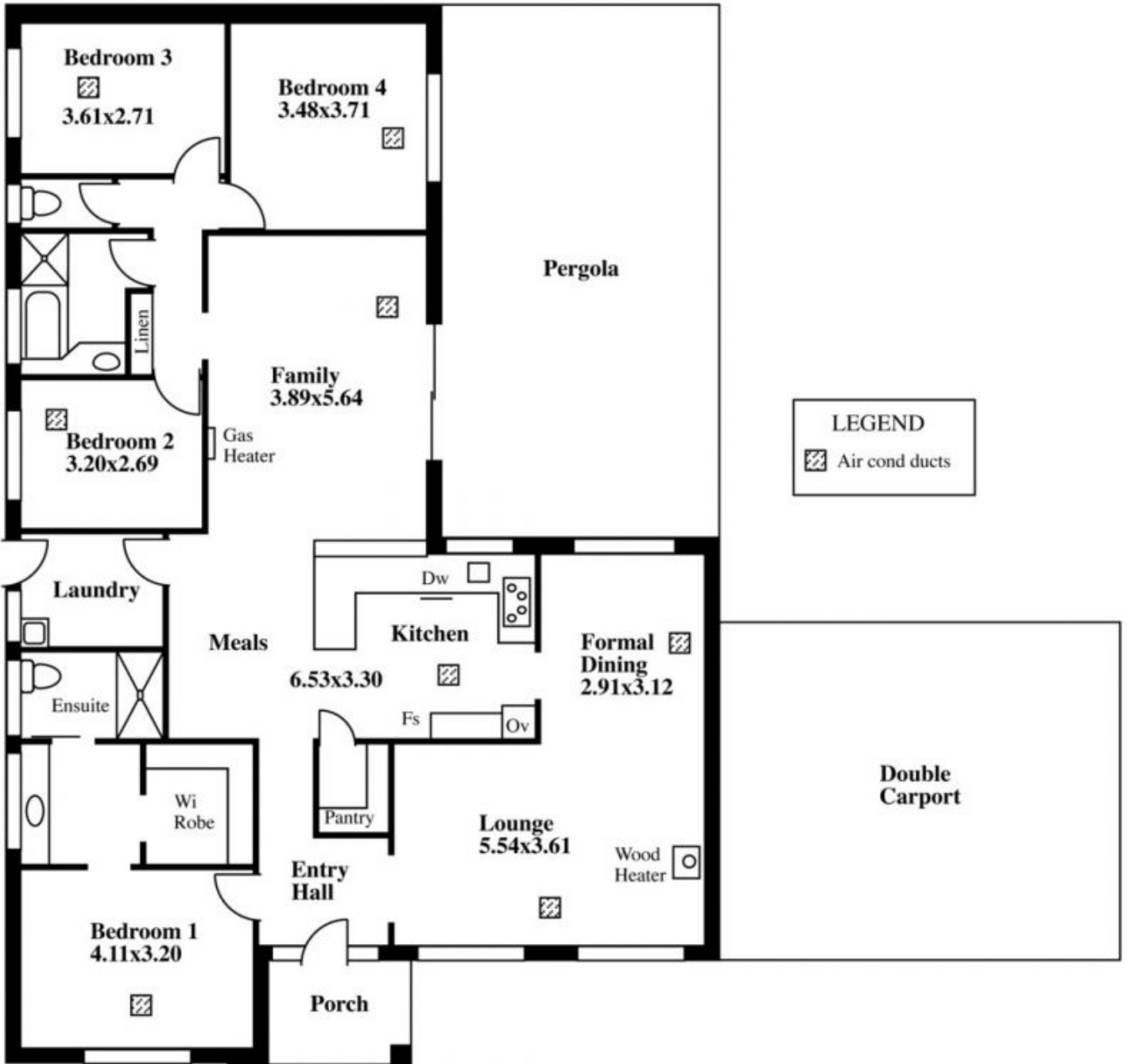


Andrew Boswell
08 8381 6000


[For full version visit the website](https://www.magain.com.au)

<https://www.magain.com.au>
Magain Real Estate

Shop 15, Woodcroft Market Plaza, 217 Pimpala Road W
08 8381 6000



LEGEND

 Air cond ducts