

# MAGAIN



## 61 Mariner Drive SHEIDOW PARK SA

3 1 1

Please call Mike Dobbin or Zoe Usher for inspection details.

Are you first home buyers or retirees looking to downsize from a large traditional block to a low maintenance property? Offering good space both inside & out, this attractive home offers the lucky new owners a usable & functional floor plan in the heart of this popular location.

Featuring three good size bedrooms, all with robes & ceiling fans, plus master with walk in robe & ensuite access to the two way bathroom. To the rear of the home is the large open plan family & meals area, with floating timber floors and split system air conditioning. The adjacent kitchen is very modern with stainless steel appliances,

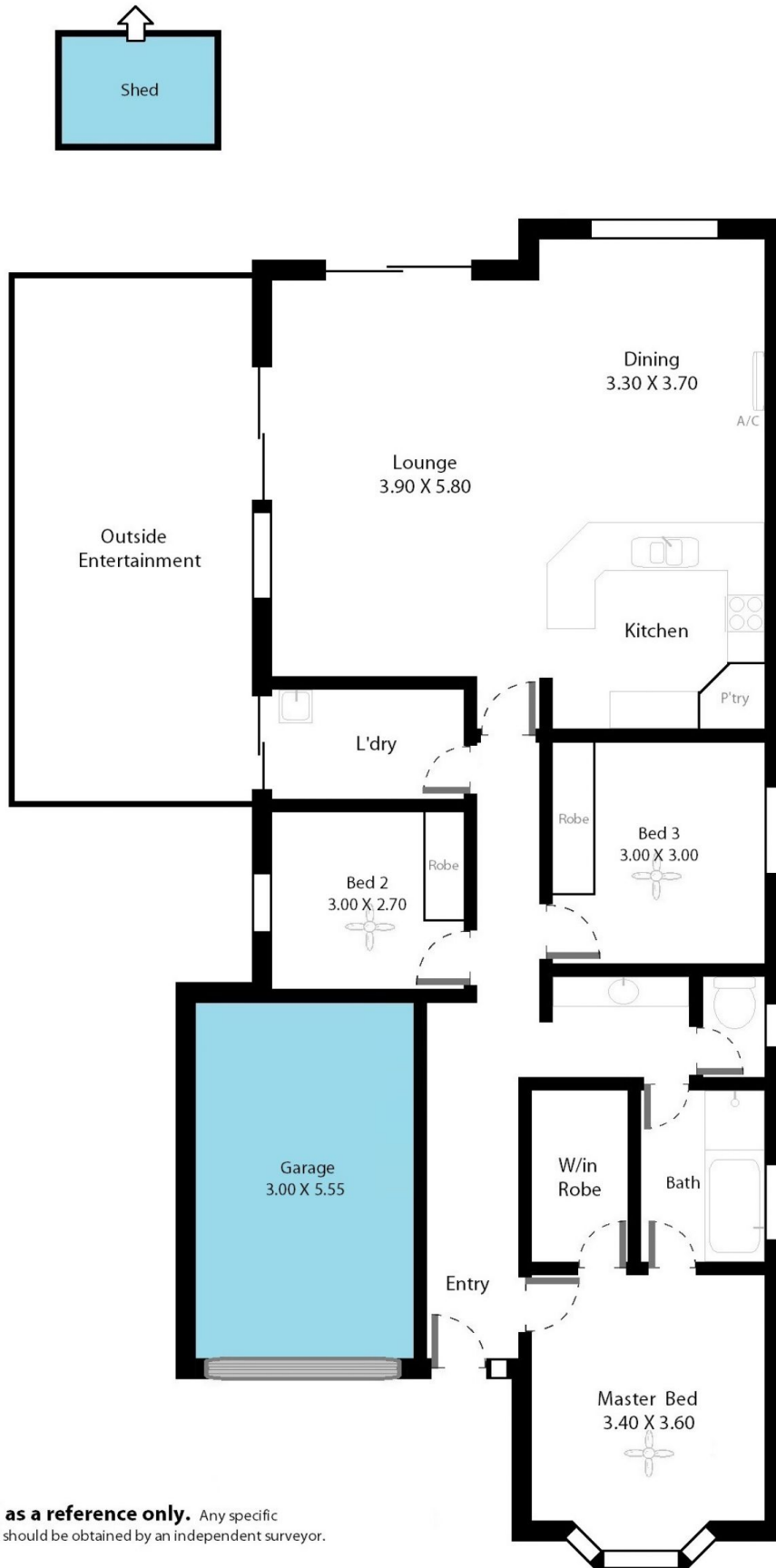
[For full version visit the website](https://www.magain.com.au/property/61-mariner-drive-sheidow-park-sa/8436873)

**Type** : House  
**Building Size** : 14 sqm  
**Land Size** : 560 sqm  
**View** : <https://www.magain.com.au/property/61-mariner-drive-sheidow-park-sa/8436873>



**Zoe Ball**  
08 8381 6000

61 Mariner Drive Sheidow Park, South Australia.



**Picture intended as a reference only.** Any specific measurements required should be obtained by an independent surveyor.