

MAGAIN



23 Crossdale Drive ABERFOYLE PARK SA

4 2 2

Please contact Andrew Boswell for viewing times.

In a sought after and peaceful location in Woodland Ridge, this eye catching property touched by charm and tradition has all the benefits of modern day living. The appeal from the street just says welcome with a real 'english cottage gardens' feeling. Meticulously maintained front gardens compliment the facade and large driveway for plenty of off street parking.

The large entrance foyer to the home allows access to the living, family and master bedroom. With high ceilings, ornate cornice work and ceiling roses all adding to the character of the home. Large and spacious master bedroom with bay window with front garden views, en suite

[For full version visit the website](https://www.magain.com.au/property/23-crossdale-drive-aberfoyle-park-sa/8436875)

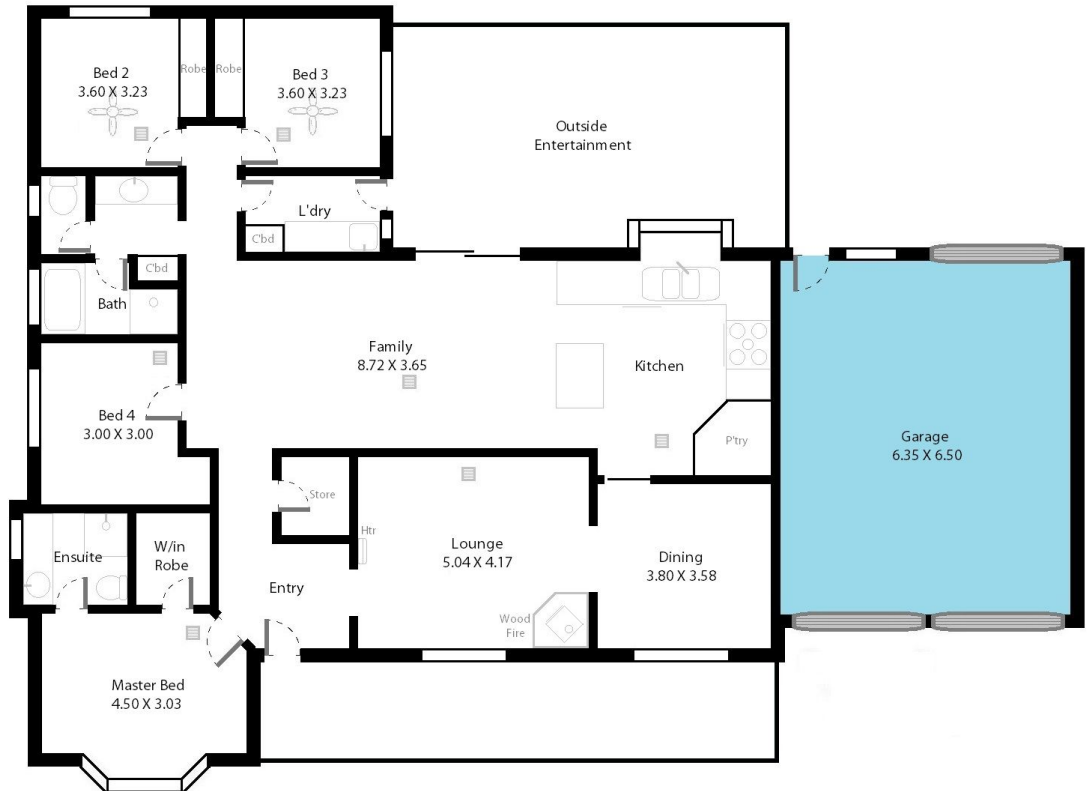
Type : House
Building Size : 24 sqm
Land Size : 750 sqm
View : <https://www.magain.com.au/property/23-crossdale-drive-aberfoyle-park-sa/8436875>



Andrew Boswell
08 8381 6000

23 Crossdale Drive Aberfoyle Park, South Australia.

Lean To	Shed 4.50 X 2.90
---------	---------------------



Picture intended as a reference only. Any specific measurements required should be obtained by an independent surveyor.