

MAGAIN



13 Lindfield Avenue EDWARDSTOWN SA

3  1  1 

Contact Andrew Boswell for further details.

Surrounded by quality, established character homes, this Bungalow is tucked away quietly in a cul-de-sac but yet offers quick and easy access to local transport routes, especially to the CBD.

Built in 1924 and with period features such as high skirtings, high ceilings, polished floorboards and woodwork, this home offers a wonderful example of buying a perfect home of yesteryear but adding to it your own tastes, flair, updates and the renovations it dreams of.

Front formal entry with hallway with polished boards, front two large bedrooms and then the third bedroom and

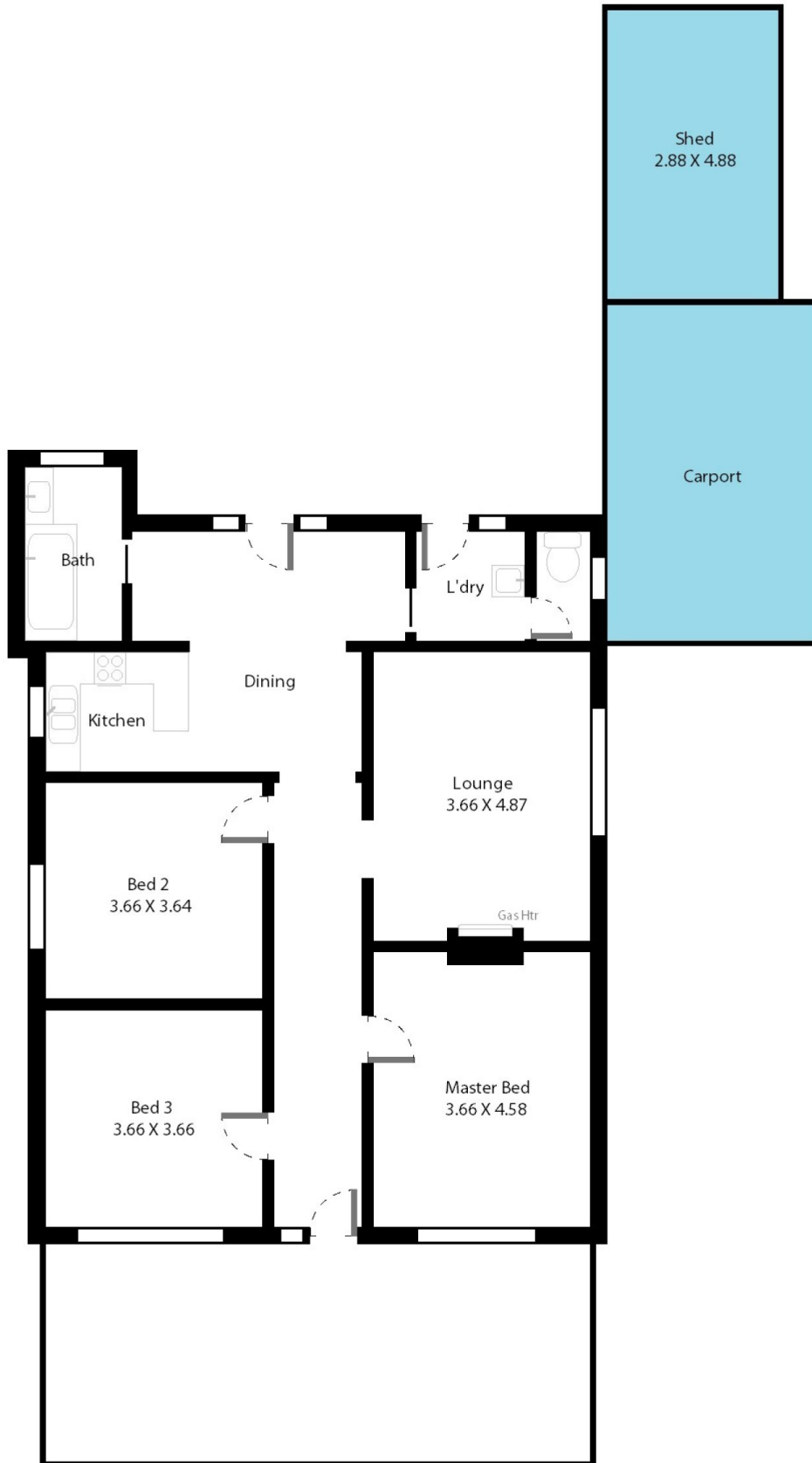
[For full version visit the website](https://www.magain.com.au/property/13-lindfield-avenue-edwardstown-sa/8436907)

Type : House
Building Size : 13 sqm
Land Size : 674 sqm
View : <https://www.magain.com.au/property/13-lindfield-avenue-edwardstown-sa/8436907>



Andrew Boswell
08 8381 6000

13 Lindfield Avenue Edwardstown, South Australia.



Picture intended as a reference only. Any specific measurements required should be obtained by an independent surveyor.