

MAGAIN



15 Gabriella Victoria Avenue WOODCROFT SA

3 1 1

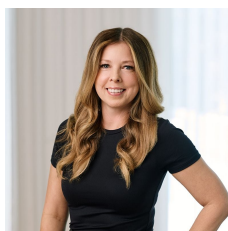
This deceptively spacious home oodles street appeal. Situated in the prestigious Woodleigh Manor Estate, close to schools, shops, parks & tennis courts; it is perfect for couples or retirees who are looking for a smaller block to look after but still need a generous floor plan.

Offering 3 good size rooms and a study, master with ensuite access to the three way bathroom, formal sitting room and a large open plan living area consisting of family room, dining area with feature bay window and of course the kitchen adjacent.

Outside offers low maintenance courtyard style living and lovely views over Woodcroft towards the hills with enough space for enjoying the warm summer nights with friends

[For full version visit the website](https://www.magain.com.au/property/15-gabriella-victoria-avenue-woodcroft-sa/8436908)

Type : House
Building Size : 16 sqm
Land Size : 396 sqm
View : <https://www.magain.com.au/property/15-gabriella-victoria-avenue-woodcroft-sa/8436908>



Zoe Ball
08 8381 6000

