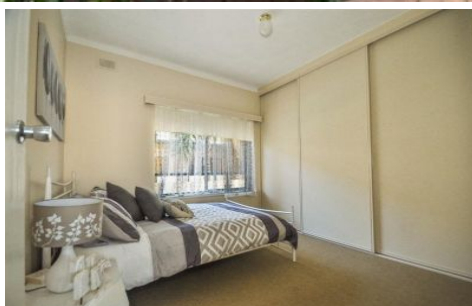


# MAGAIN



## 19-127 Anzac Highway KURRALTA PARK SA

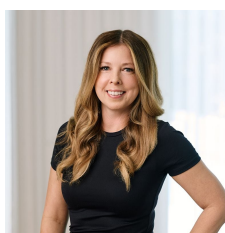
2 1

Situated in this super handy location, between Glenelg and the CBD, this affordable unit will appeal to investors and first home buyers alike.

The Dorchester Complex', features a communal inground swimming pool and outdoor area, two bedrooms, open plan kitchen/living and new split system heating and cooling.

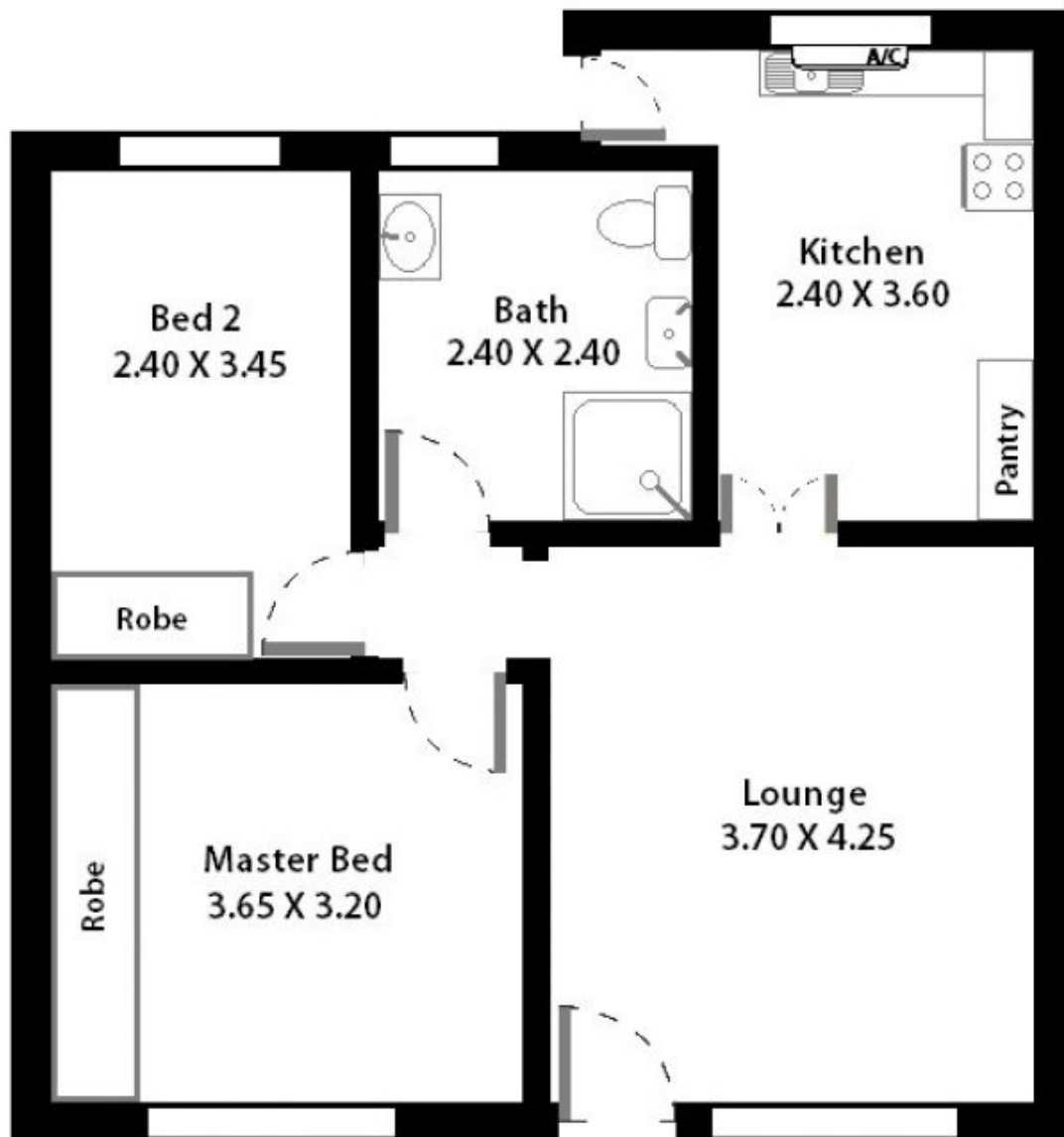
Previously rented for \$240 pw, it represents excellent value for those looking to increase their portfolio, or a handy 5 minute drive for those that work in the city.

**Type** : Unit  
**Building Size** : 7 sqm  
**View** : <https://www.magain.com.au/property/19-127-anzac-highway-kurralta-park-sa/8436923>



**Zoe Ball**  
08 8381 6000

Unit 19, 127 Anzac Highway Kuralta Park. South Australia



Estimate of living area:  
51.30 Square meters/ 5.52 Squares

Picture intended as a reference only. **Any specific measurements required should be obtained by an independent surveyor.**