

MAGAIN



1 Grassdale Rise ABERFOYLE PARK SA

3 2 1

Located in Woodlea Estate, this character filled home set over two storeys is eye catching both internally and externally.

With lovely front manicured gardens, the contemporary design and architecturally influenced exterior add to a very attractive appearance. With a front courtyard just perfect for the morning coffee and paper.

Inside we have a large formal lounge with gas heater, high ceilings and formal dine, both with feature exposed brickwork. Through to the family room with gas wall furnace, updated kitchen with dishwasher and large feature windows with natural light in abundance and an outlook to your pretty private rear gardens. Downstairs we have a

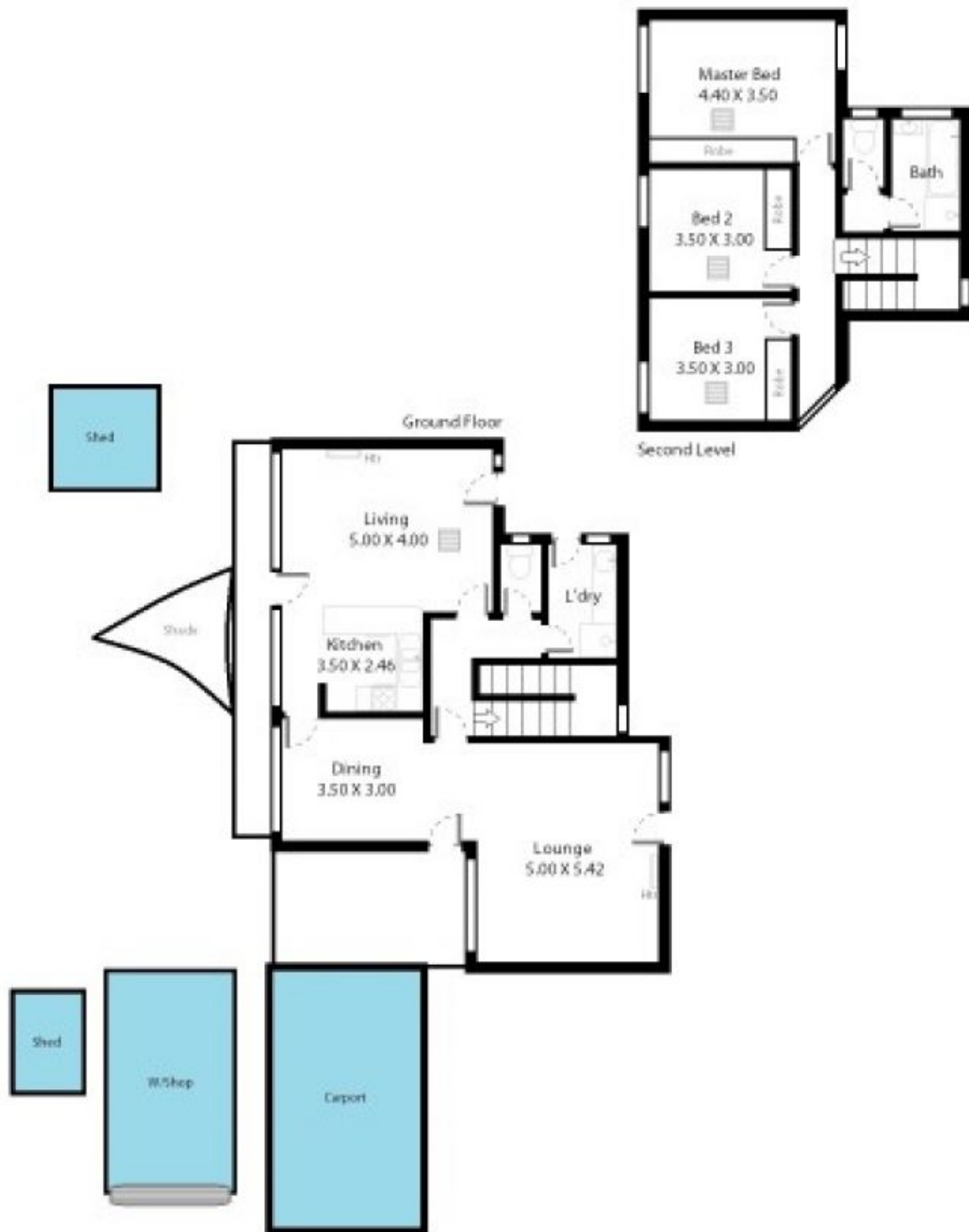
[For full version visit the website](https://www.magain.com.au/property/1-grassdale-rise-aberfoyle-park-sa/8436928)

Type : House
Building Size : 18 sqm
Land Size : 836 sqm
View : <https://www.magain.com.au/property/1-grassdale-rise-aberfoyle-park-sa/8436928>



Andrew Boswell
08 8381 6000

1 Grassdale Rise Aberfoyle Park, South Australia.



Picture intended as a reference only. Any specific measurements required should be obtained by an independent surveyor.