

MAGAIN



13 Hertford Place NOARLUNGA DOWNS SA

4 2 2

A fantastic opportunity to pick up this huge 2009 built home in the heart of 'The Point'. This spacious 253sqm home has definitely been designed & built with the family in mind. With its versatile and functional floor plan it offers room to live and entertain friends and a growing family.

Offering four bedrooms, master with large ensuite and walk in robe, separate study/office, formal lounge & dining to the front of the home, finished with floating timber floors, double timber entry door and feature glass wall, an open plan family/meals area, adjacent kitchen with stainless steel appliances, including dishwasher, glass fronted cabinets plus a large space for a double door fridge.

Outside of the home, the 676sqm block is a blank canvas

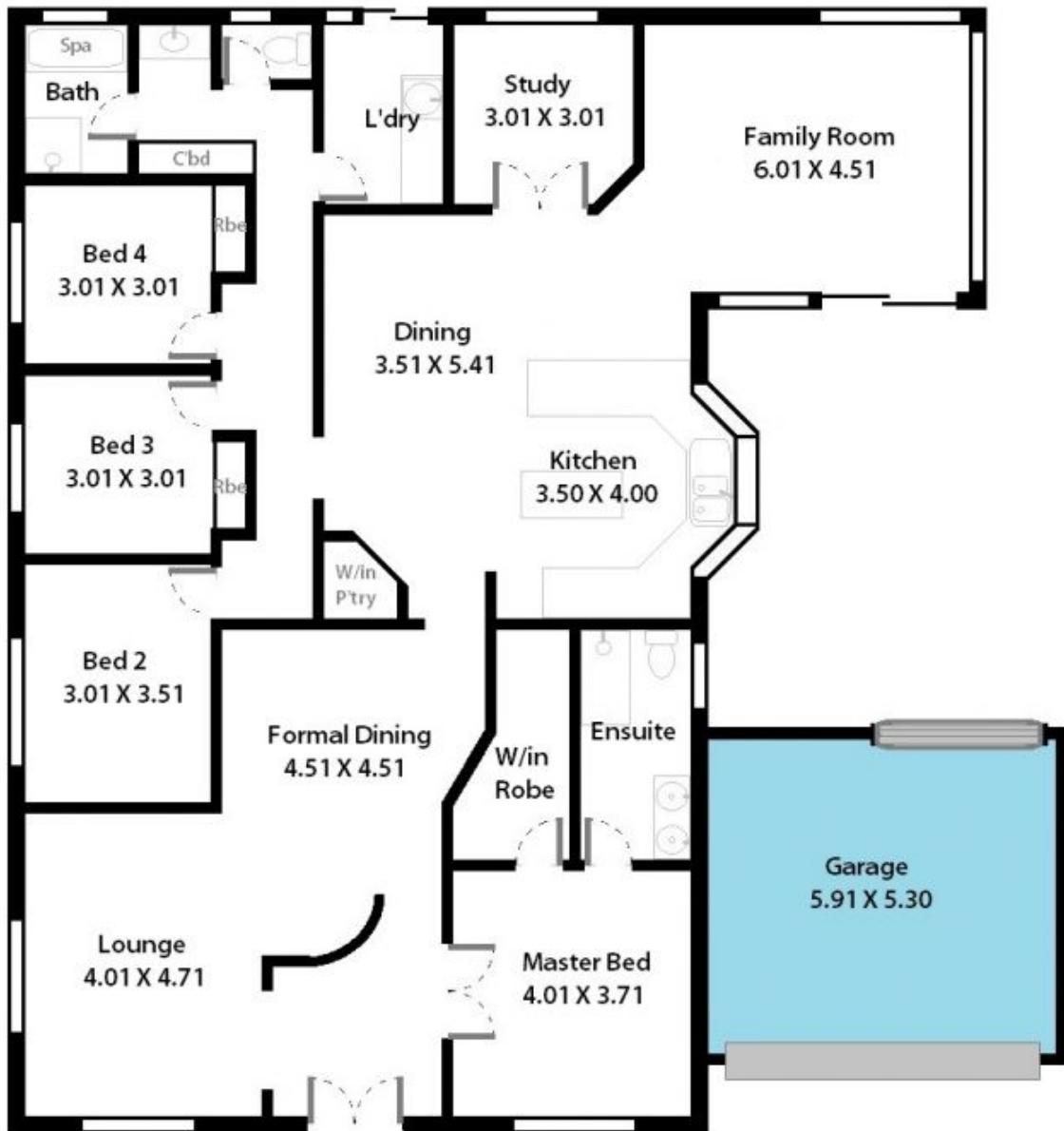
[For full version visit the website](https://www.magain.com.au/property/13-hertford-place-noarlunga-downs-sa/8436944)

Type : House
Building Size : 27 sqm
Land Size : 676 sqm
View : <https://www.magain.com.au/property/13-hertford-place-noarlunga-downs-sa/8436944>



Zoe Ball
08 8381 6000

13 Hertford Place Noarlunga Downs, South Australia.



Picture intended as a reference only. Any specific measurements required should be obtained by an independent surveyor.