

# MAGAIN



**212-50 Esplanade CHRISTIES BEACH SA**

**2**  **1**  **2** 

The feeling you get just standing on the balcony, gazing out to the ocean, makes any uncertainty about apartment living just fade into the setting sun. Living in this iconic building makes every day feel like a holiday. It is low maintenance living at its finest, especially when you compare the value for money against other similar buildings at the Bay or Victor Harbor. This 2 bedroom apartment, being located on the second floor and toward the eastern end of the building, means you have a great balance of privacy and seclusion. The location in the building provides beautiful north/northwest views of Christies Beach, including the horseshoe reef, and provides protection from the harsher elements along the seafront. Once inside, this home really shines. At just over 120 sqm of living this is a generous space with generous amounts of natural light accentuated

**Type** : Apartment

**View** : <https://www.magain.com.au/property/21250-esplanade-christies-beach-sa/8436951>



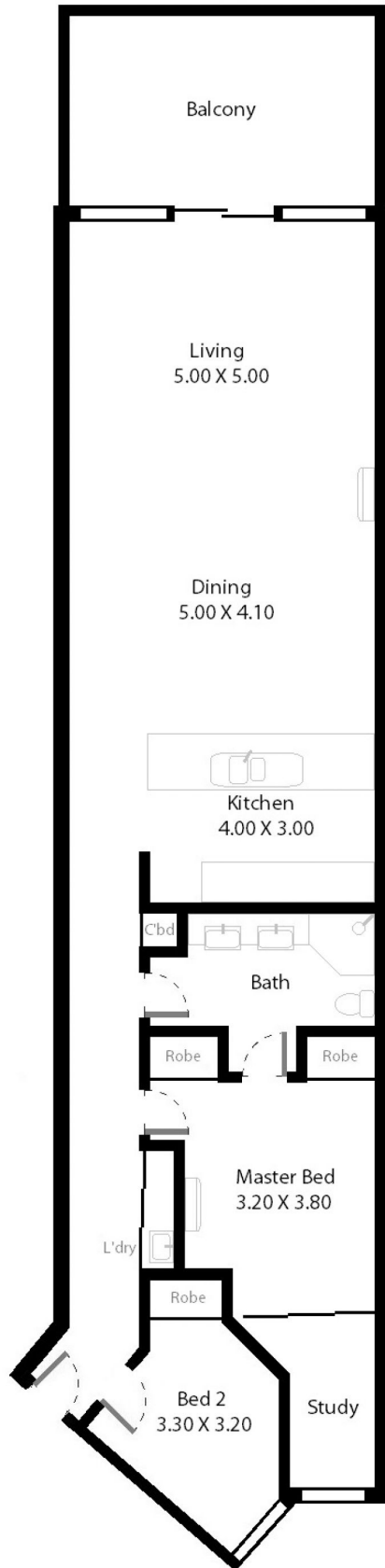
**Scott McPharlin**  
**08 8382 0029**

[For full version visit the website](https://www.magain.com.au)

<https://www.magain.com.au>  
Magain Real Estate

Shop 15, Woodcroft Market Plaza, 217 Pimpala Road W  
08 8381 6000

212/50 Esplanade Christies Beach, South Australia.



**Picture intended as a reference only.** Any specific measurements required should be obtained by an independent surveyor.