

MAGAIN



26 Maritime Road SEAFORD MEADOWS SA

4 2 1

Located at the end of a quiet court in this newly established estate this 2010 built home offers a functional floor plan for any first home buyers, anyone looking to downsize from a large traditional block of even a savvy investor looking to start their property portfolio.

Offering 4 good size bedrooms, master with walk in robe & ensuite, large open plan living & dining area with lovely timber floating floors and vaulted ceiling, and adjacent kitchen with pantry, wide fridge space and stainless steel appliances with provision for a dishwasher.

With an alfresco entertaining area complete with lighting, well looked after yard & gardens, secure lock up garage, with internal access, and a handy garden shed for extra

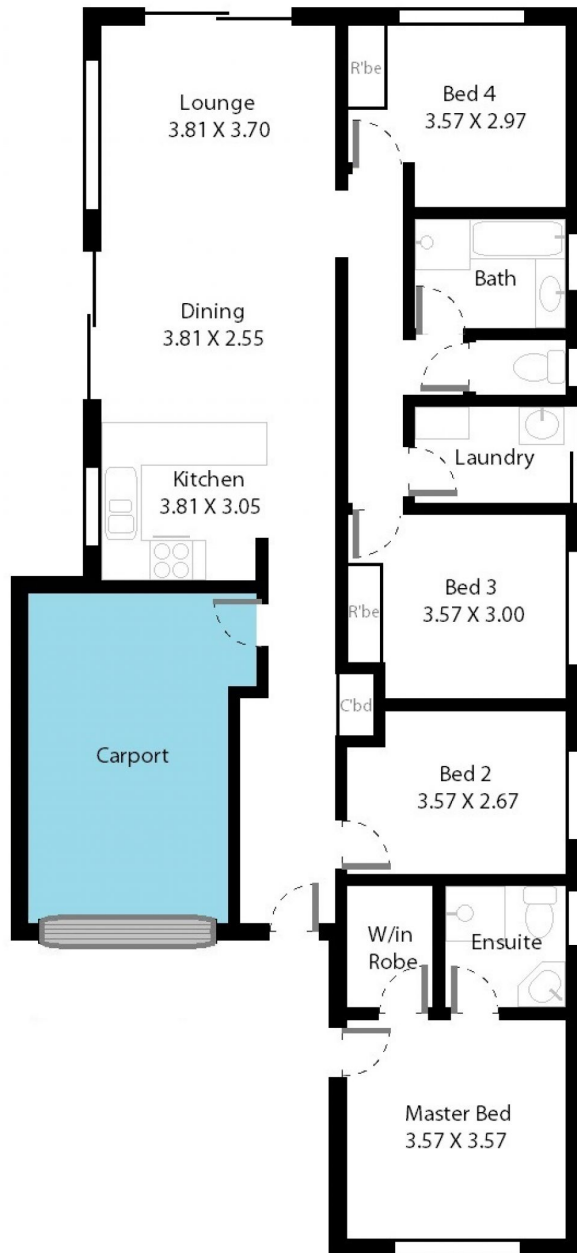
[For full version visit the website](https://www.magain.com.au/property/26-maritime-road-seaford-meadows-sa/8436961)

Type : House
Building Size : 17 sqm
Land Size : 402 sqm
View : <https://www.magain.com.au/property/26-maritime-road-seaford-meadows-sa/8436961>



Zoe Ball
08 8381 6000

26 Maritime Road Seaford, South Australia.



Picture intended as a reference only. Any specific measurements required should be obtained by an independent surveyor.