

MAGAIN



5 Kari Crescent HUNTFIELD HEIGHTS SA

4  2  4 

This is a fantastically designed, 2007 built home, of approximately 211sqm in size on a low maintenance 450sqm allotment amongst appealing homes in the popular and peaceful Paringa View Estate.

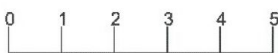
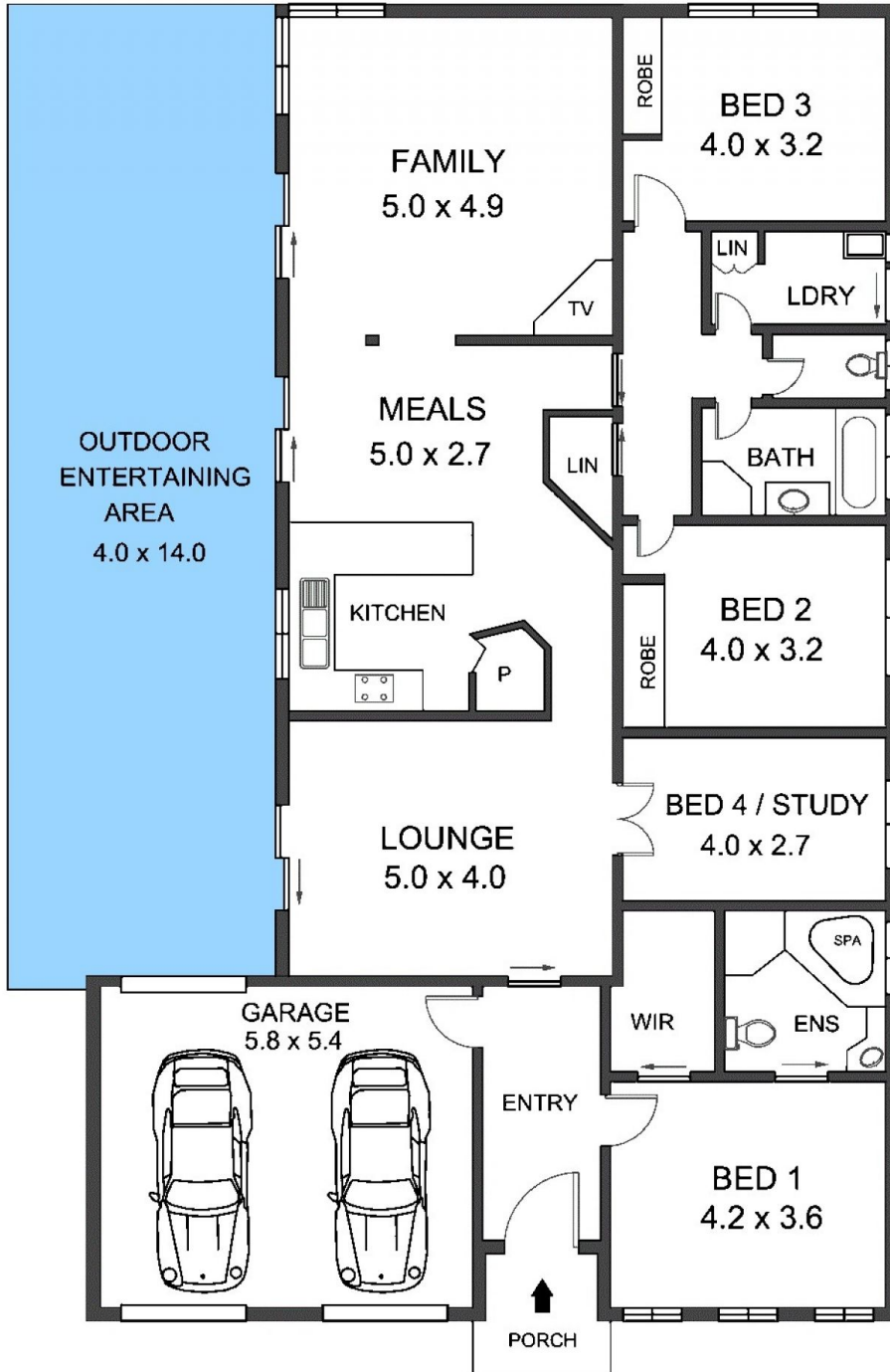
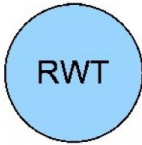
The home possesses 4 double bedrooms and with built in robes in bedrooms 2 and 3. The master has a great size walk in robe and ensuite with corner spa. The 4th bedroom could easily be used as the study or formal dining room as it is adjacent the formal lounge and at the end of an extra wide entrance foyer. The other living areas consist of a deluxe open plan kitchen with walk in pantry and dishwasher which is adjacent dining room and overlooking the spacious separate family room with built in storage and TV recess.

[For full version visit the website](https://www.magain.com.au/property/5-kari-crescent-huntfield-heights-sa/8436962)

Type : House
Building Size : 23 sqm
Land Size : 450 sqm
View : <https://www.magain.com.au/property/5-kari-crescent-huntfield-heights-sa/8436962>



Scott McPharlin
08 8382 0029



Scale in metres. Indicative only. Dimensions are approximate.
All information contained herein is gathered from sources we believe to be reliable. However we cannot guarantee its accuracy and interested persons should rely on their own enquiries.



5 KARI