

# MAGAIN



## 3 Beverley Street MORPHETT VALE SA

4 🚗 1 🚚 8 🚗

Investors and young families you need to come and take a look at this beauty as it's sure to go fast. Located In a great street in and very close proximity to fantastic schools this 4 bedroom home has something for everyone!

Located on a large 718 sqm of land with a massive 21m frontage this property will certainly give your great options in the future for the investors. With massive amounts of parking for up to 8 cars this well presented home will also certainly please the handyman or car enthusiast.

Inside you will find 4 ample bedrooms and a fully renovated main bathroom with modern fittings and neutral tones. The large lounge is a very functional space and has been freshly painted and features floating floors throughout. The

[For full version visit the website](https://www.magain.com.au/property/3-beverley-street-morphett-vale-sa/8436964)

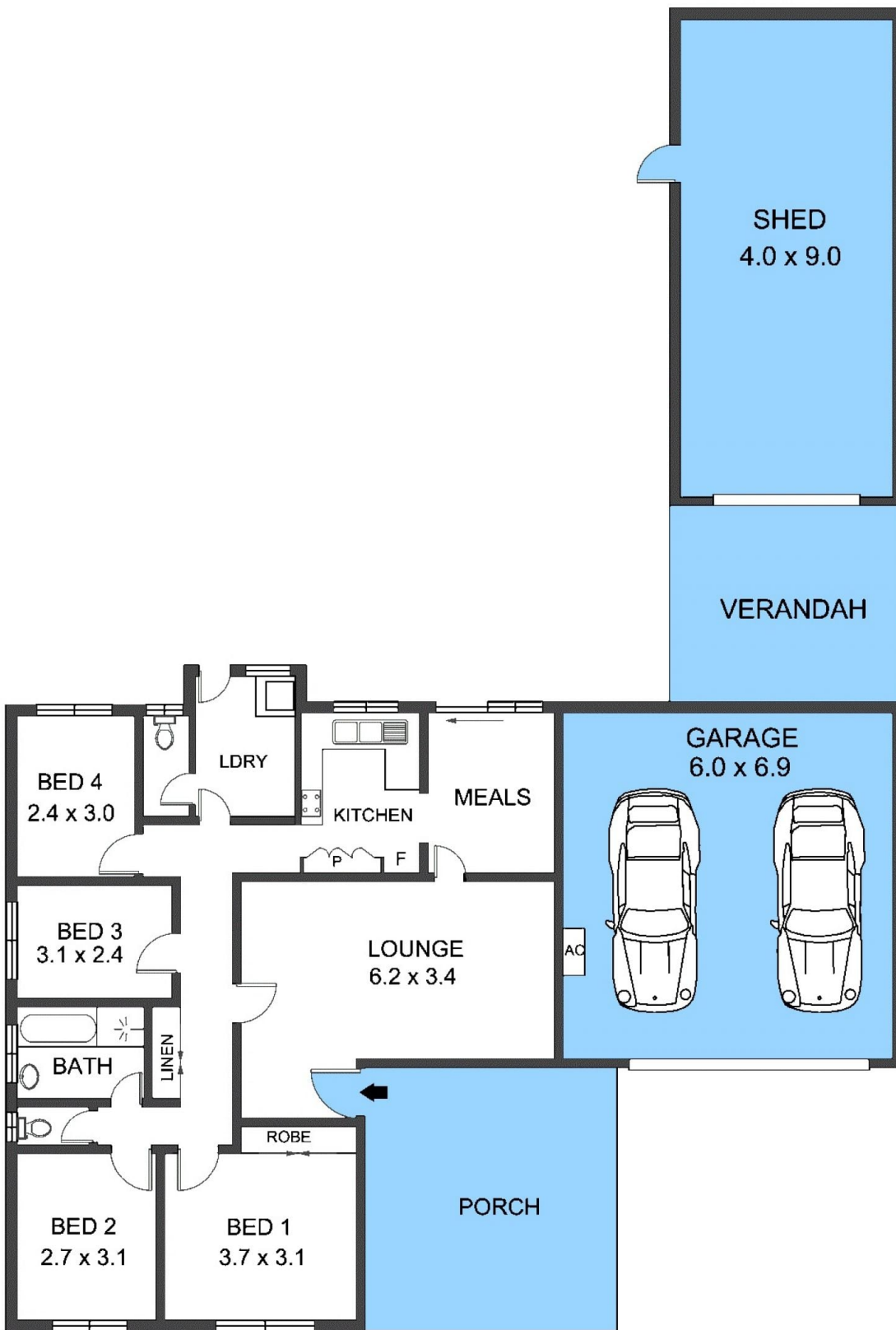
**Type** : House  
**Building Size** : 12 sqm  
**Land Size** : 718 sqm  
**View** : <https://www.magain.com.au/property/3-beverley-street-morphett-vale-sa/8436964>



**Scott McPharlin**  
08 8382 0029

<https://www.magain.com.au>  
Magain Real Estate

Shop 15, Woodcroft Market Plaza, 217 Pimpala Road W  
08 8381 6000



Scale in metres. Indicative only. Dimensions are approximate.  
 All information contained herein is gathered from sources we believe to be reliable. However we cannot guarantee its accuracy and interested persons should rely on their own enquiries.



### 3 - BEVERLEY