

MAGAIN



20 Talladira Way WOODCROFT SA

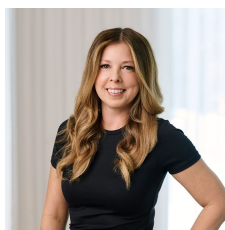
4 2 3

Situated on a corner block in the heart of Woodcroft, this huge family home will tick many boxes for any fastidious buyer looking for a functional & spacious floor plan as well as a host of features inside & out.

Close to local shops, schools and handy to transport, this is a smart choice for all growing families.

Offering four good size bedrooms, all with robes and master with walk in robe & ensuite, ?L? shaped formal lounge & dining room with gas log fire and feature timber fireplace, updated kitchen with dishwasher, large open plan family & meals area, with room for a pool table.

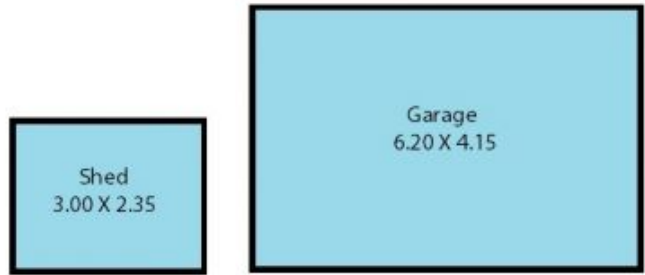
Type : House
Building Size : 21 sqm
Land Size : 685 sqm
View : <https://www.magain.com.au/property/20-talladira-way-woodcroft-sa/8436965>



Zoe Ball
08 8381 6000

[For full version visit the website](https://www.magain.com.au)

20 Talladira Way Woodcroft, South Australia.



Picture intended as a reference only. Any specific measurements required should be obtained by an independent surveyor.