

MAGAIN



10A Olivier Crescent MORPHETT VALE SA

5 3 1

This spacious & modern two storey home will be a sure fire hit for anyone looking for something with ?wow factor?. Situated in a quiet court, and set back from the road this stunning home is perfect for growing families, located minutes to schools, shops and handy to transport it really does tick all the boxes.

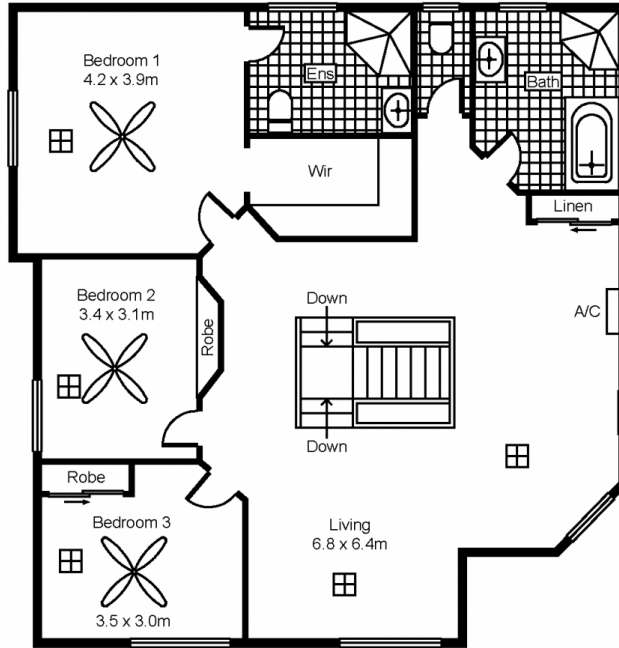
The functional floor plan offers many options, currently set up as a five bedroom home; the large fifth bedroom can be used as a separate rumpus room or teenage retreat with attached bathroom/laundry. The bottom story holds the stunning kitchen with island bench & dishwasher, overlooking the open plan family room & dining, 4th bedroom and teenage retreat also on the ground floor. The Feature LED lit staircase leads up to a second living space

[For full version visit the website](https://www.magain.com.au)

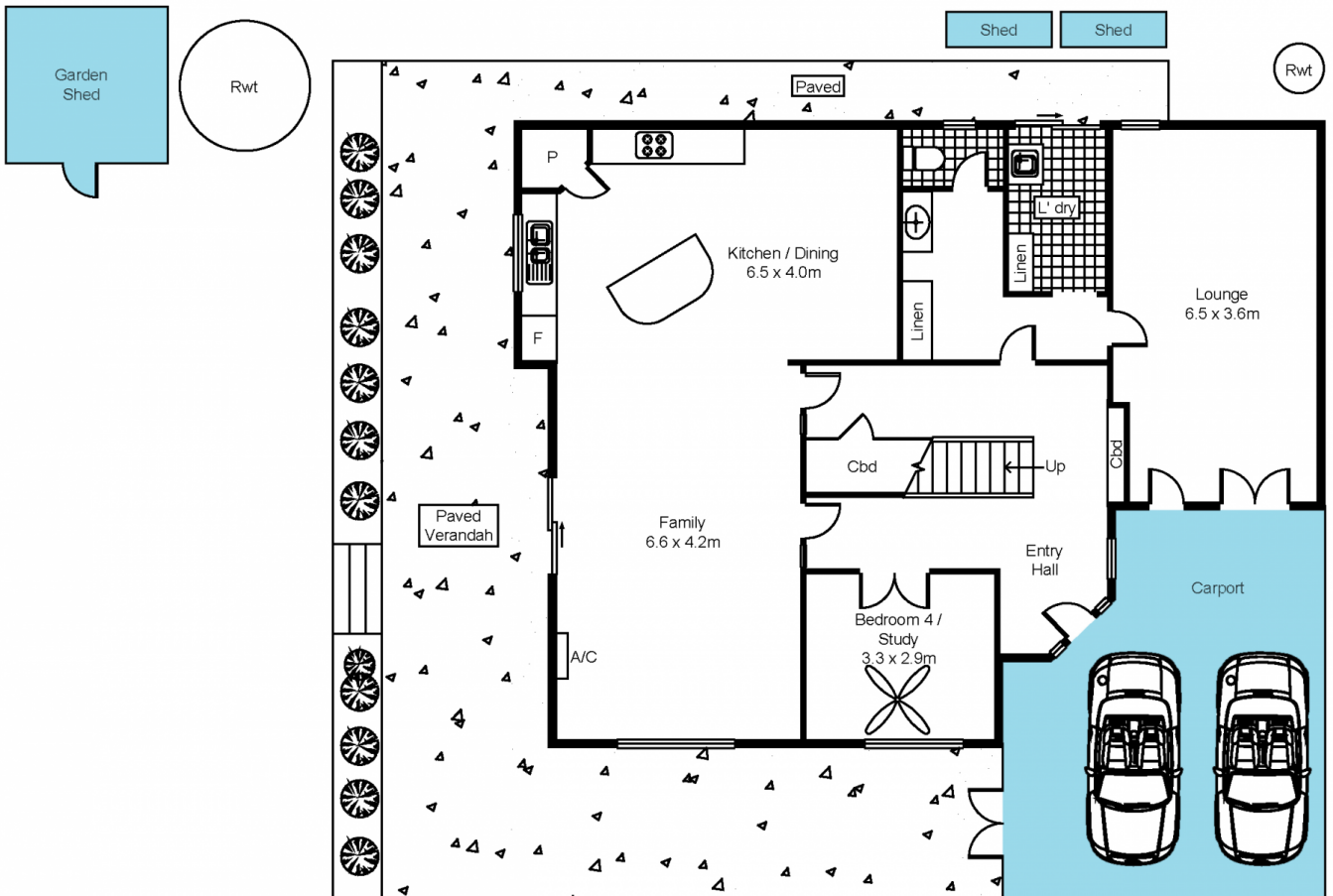
Type : House
Building Size : 26 sqm
Land Size : 471 sqm
View : <https://www.magain.com.au/property/10-a-olivier-crescent-morphett-vale-sa/8436980>



Sam Raven
08 8381 6000



First Floor



Ground Floor



Scale in metres. Indicative only. Dimensions are approximate. All information contained herein is gathered from sources we believe to be reliable. However we cannot guarantee its accuracy and interested persons should rely on their own enquiries.

Int : 252m²

10A Olivier Court, Morphett Vale