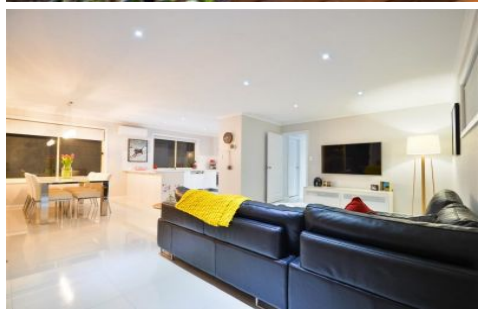


MAGAIN



27 Sovereign Drive WOODCROFT SA

3 2 1

Beautifully styled throughout, this 2012 built home is a great offering for both busy professionals and young growing families. Situated in the sought after Kings Green Estate, it is handy to two shopping centres along with local schools and transport, all making busy life that bit easier.

Featuring three good size bedrooms, all with robes and master with walk in robe and ensuite bathroom, polished porcelain tiles through to the large open plan family/meals area, beautiful modern kitchen with integrated dishwasher, stainless steel appliances & kick panels plus plenty of bench & cupboard space.

Outside you will find a lovely timber decked alfresco entertaining area, complete with lighting & currently set up

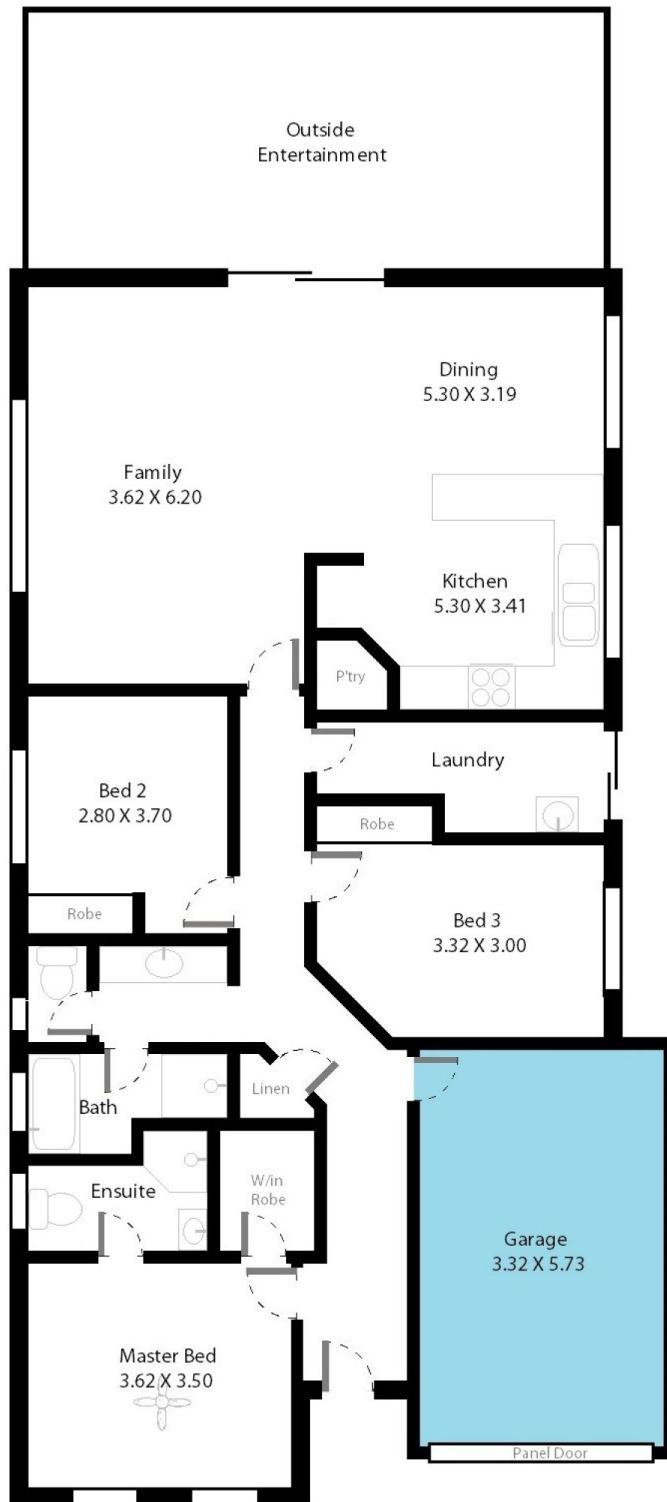
[For full version visit the website](#)

Type : House
Building Size : 17 sqm
Land Size : 373 sqm
View : <https://www.magain.com.au/property/27-sovereign-drive-woodcroft-sa/8436985>



Zoe Ball
08 8381 6000

27 Sovereign Drive Woodcroft, South Australia.



Picture intended as a reference only. Any specific measurements required should be obtained by an independent surveyor.