

MAGAIN



1-502 Fullarton Road MYRTLE BANK SA

2  1  1 

Situated close to the fringe of the CBD and just minutes to Adelaide University Urrbrae campus, is this wonderfully updated unit. A perfect start for a first home buyer looking to enter the market, or even a savvy investor looking for something where all the hard work has been done.

Offering two good size bedrooms, both featuring built in robes, open plan family room and dining area, brand new kitchen with a super modern look, with stainless steel appliances, gas cooking & plenty of bench & cupboard space and not to forget the totally renovated bathroom.

Outside offers your own private oasis, the paved courtyard features an undercover pergola and has been beautifully landscaped with a low maintenance East Asian feel.

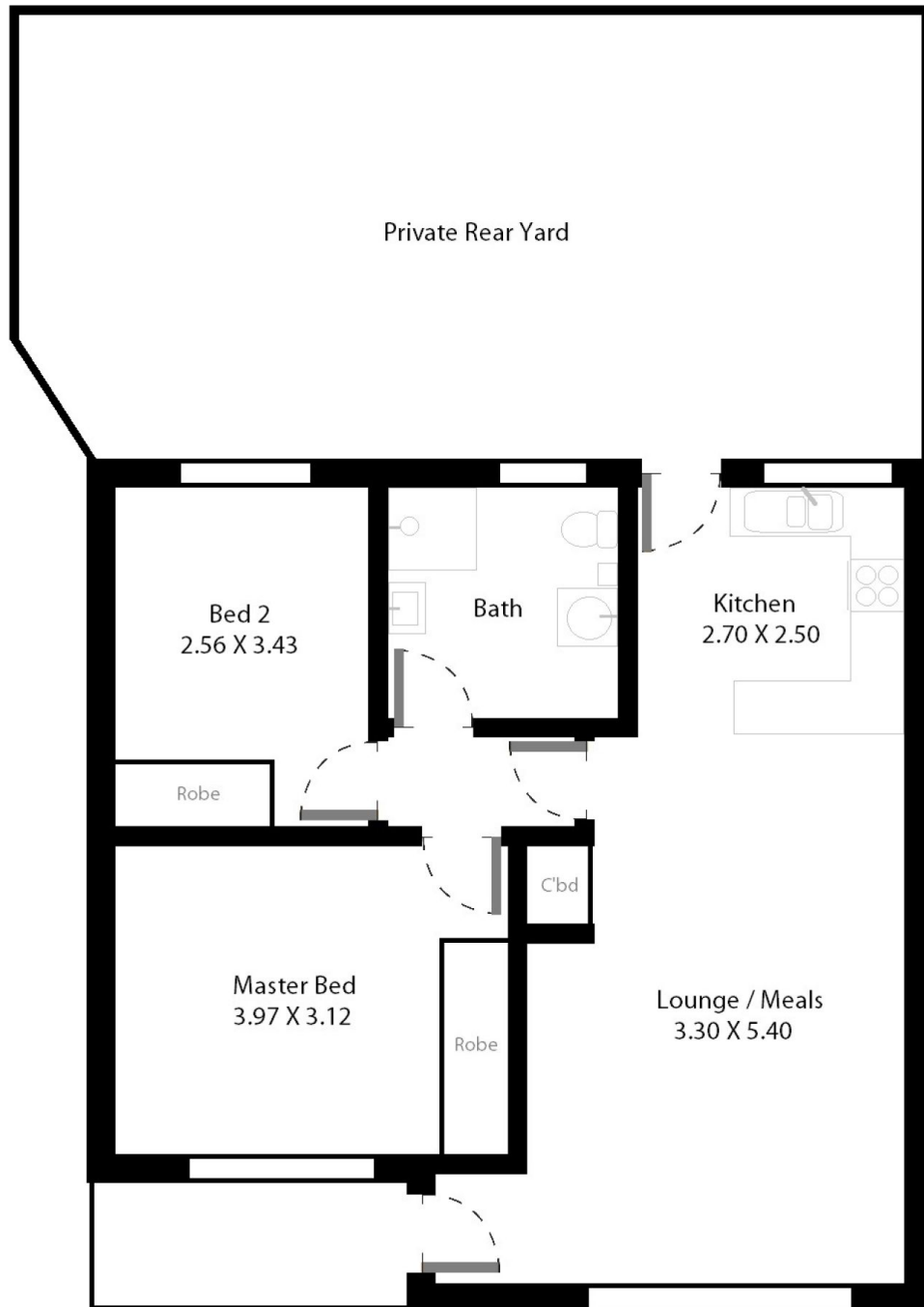
[For full version visit the website](https://www.magain.com.au/property/15-02-fullarton-road-myrtle-bank-sa/843698)

Type : House
Building Size : 7 sqm
View : <https://www.magain.com.au/property/15-02-fullarton-road-myrtle-bank-sa/843698>
9



Zoe Ball
08 8381 6000

Unit 1/502 Fullarton Road Myrtle Bank, South Australia.



Picture intended as a reference only. Any specific measurements required should be obtained by an independent surveyor.