

# MAGAIN



16 Brookland Valley Drive WOODCROFT SA

4  1  3 

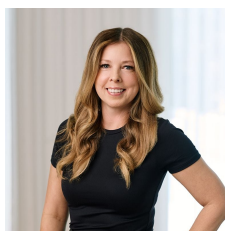
Call Mike or Zoe for inspection details.

This family home offers a great opportunity, rarely seen in residential Woodcroft. Situated on a huge 1,170 square meter block it offers room for the whole family both inside & out, plus a splendid outlook over the waterways of the golf course, giving plenty of options for any lifestyle.

Offering four bedrooms, master with walk in robe & ensuite access to the two way bathroom, a large formal lounge at the front of the home, dwarf walls to the dining room & second living room open up the home to give it a true open plan feel. The central kitchen is complete with dishwasher & high breakfast bar plus a big bonus of a separate study/office, perfect for high school or uni students.

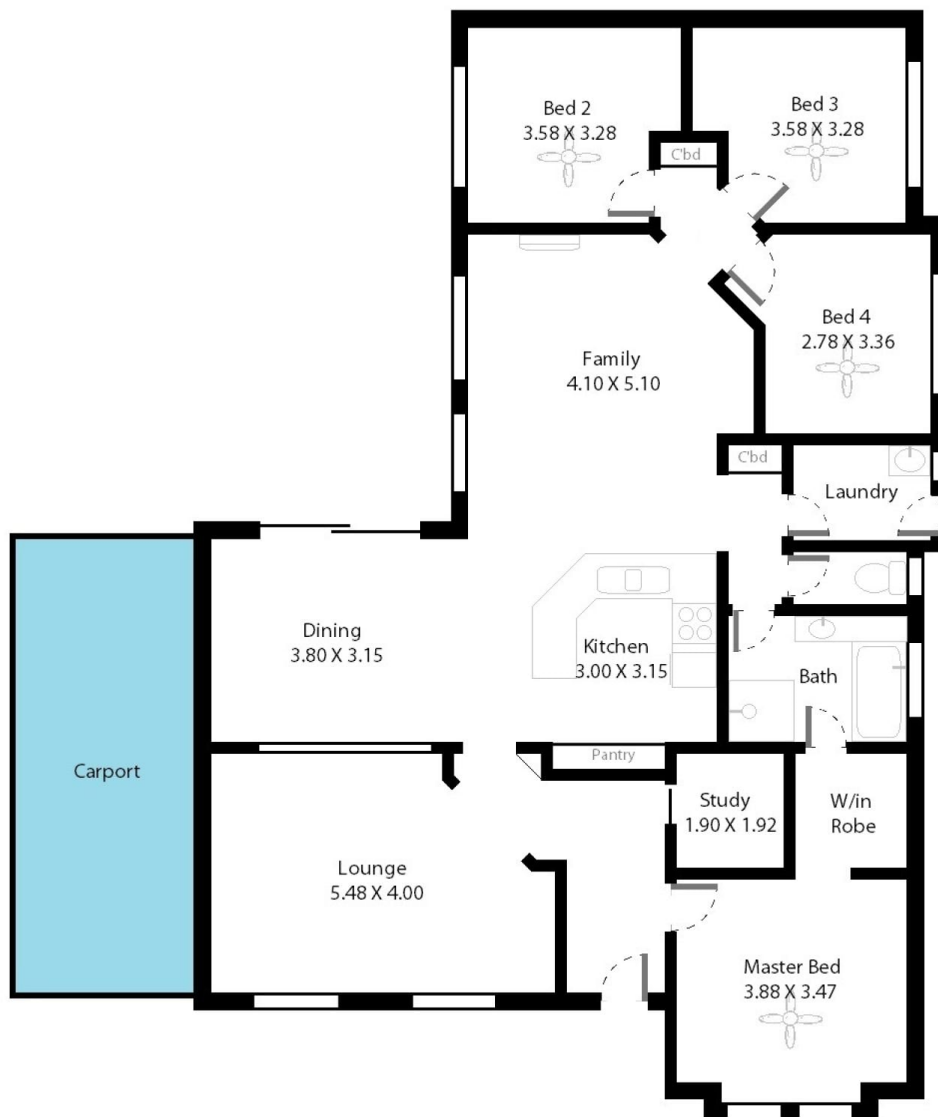
[For full version visit the website](https://www.magain.com.au/property/16-brookland-valley-drive-woodcroft-sa/8437007)

**Type** : House  
**Building Size** : 19 sqm  
**Land Size** : 1175 sqm  
**View** : <https://www.magain.com.au/property/16-brookland-valley-drive-woodcroft-sa/8437007>



**Zoe Ball**  
08 8381 6000

16 Brookland Valley Drive, Woodcroft, South Australia.



**Picture intended as a reference only.** Any specific measurements required should be obtained by an independent surveyor.