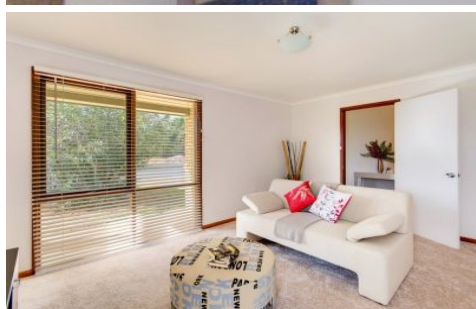


MAGAIN



35 Troutbeck Crescent HUNTFIELD HEIGHTS SA

3  1  2 

Please call Scott McPharlin for viewing times.

Introducing a highly appealing family home that is peacefully located yet within easy distance of schools, Colonnades shopping centre, southern expressway and just a short drive to our beautiful beaches.

Fantastic decor is evident throughout the home, which includes three great size bedrooms, exceptionally large formal living, plus twinned kitchen and formal dining area.

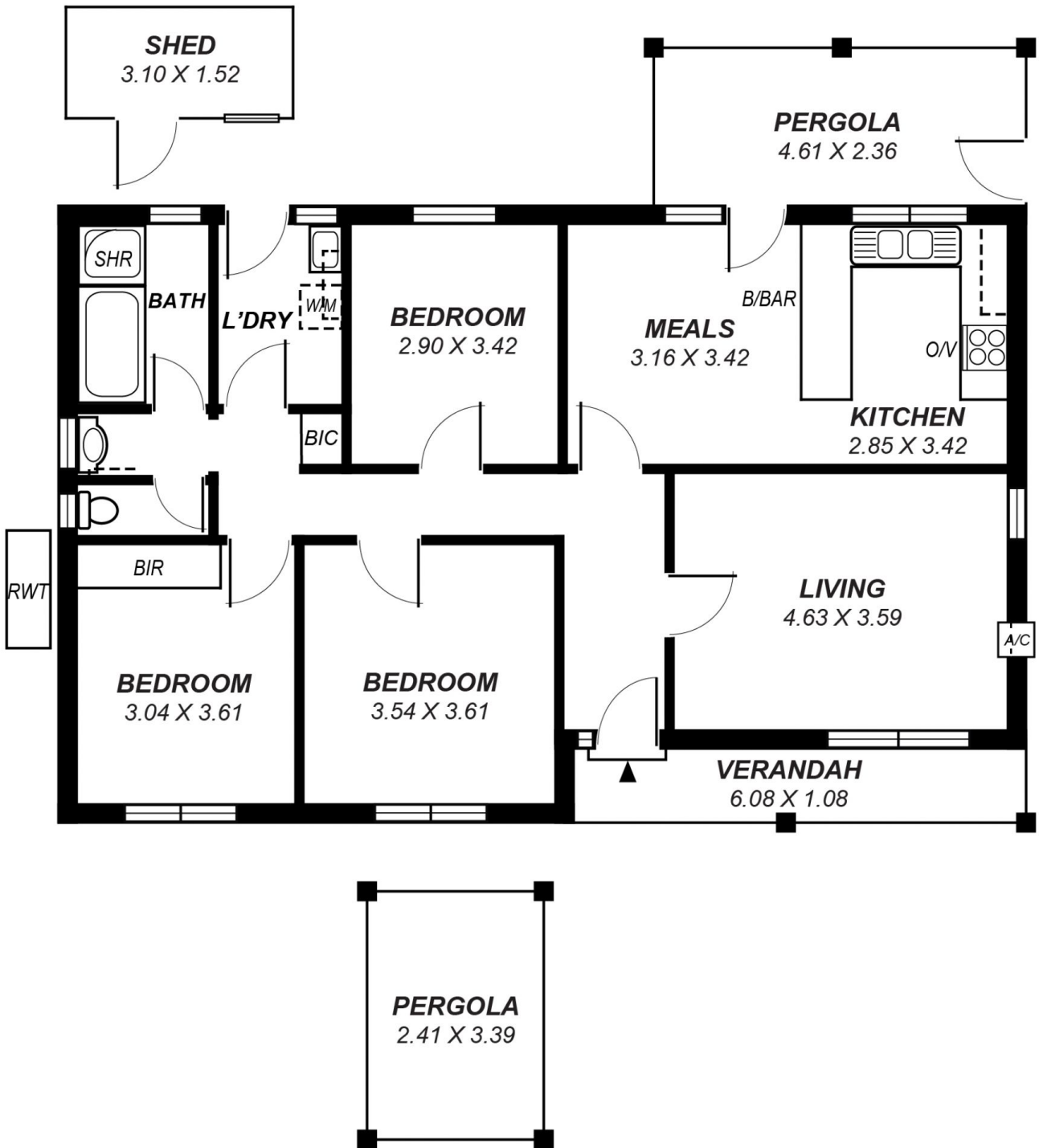
Externally, the property includes a large back yard, undercover entertaining, garden shed, rain water tank and rear yard access!

[For full version visit the website](https://www.magain.com.au/property/35-troutbeck-crescent-huntfield-heights-sa/8437009)

Type : House
Land Size : 610 sqm
View : <https://www.magain.com.au/property/35-troutbeck-crescent-huntfield-heights-sa/8437009>



Scott McPharlin
08 8382 0029



*This drawing is for illustration purposes only .
 All measurements are approximate and details intended
 to be relied upon should be independently verified.*