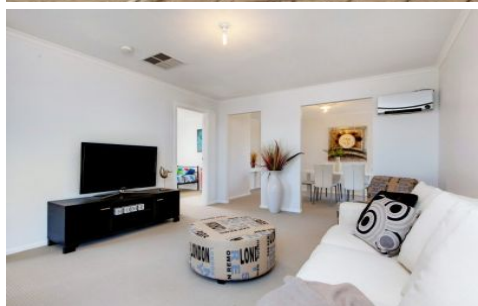


MAGAIN



2 Redwood Close NOARLUNGA DOWNS SA

3 2 2

Please contact Scott Mcpharlin for viewing times.

This delightfully presented 2004 built home ticks all the boxes for anyone looking for a low maintenance block with plenty of room to enjoy inside. This home will suit young professionals, families or retirees wanting an easy care lifestyle.

With three bedrooms, master with walk in robe and ensuite, large lounge and dining area plus a separate open plan meals area overlooking the kitchen that has lots of bench & cupboard space.

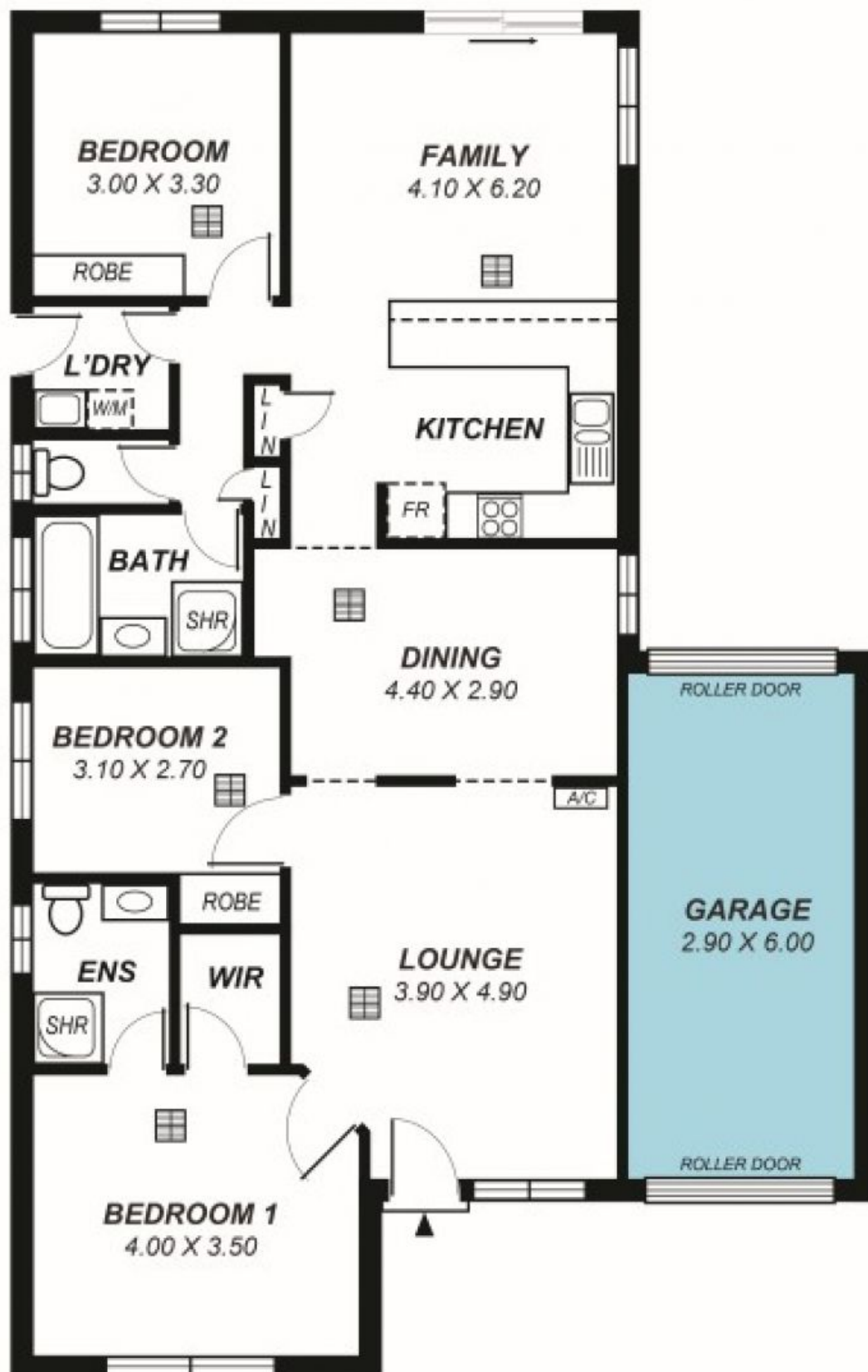
Outside features include a single garage with drive through access and neat easy care gardens.

[For full version visit the website](https://www.magain.com.au/property/2-redwood-close-noarlunga-downs-sa/8437015)

Type : House
Building Size : 15 sqm
Land Size : 356 sqm
View : <https://www.magain.com.au/property/2-redwood-close-noarlunga-downs-sa/8437015>



Scott McPharlin
08 8382 0029



*This drawing is for illustration purposes only .
 All measurements are approximate and details intended
 to be relied upon should be independently verified.*