

MAGAIN



33 Grevillea Road ABERFOYLE PARK SA

3 2 2

Call Andrew Boswell today for further details.

With a fantastic rear exterior entertaining haven, come and get yourself ready for summer now with a lovely in-ground swimming pool. Be the envy of your friends because your outside get togethers, parties and bbq's under the extensive verandah overlooking the pool will be a real winner.

In a great neighbourhood for families and kids, this perfectly positioned home in the 'Woodlea Estate' pocket is in a great location and filled with style.

Impressive upon entry with spacious split level comfortable and relaxing formal lounge with gas heating and dedicated

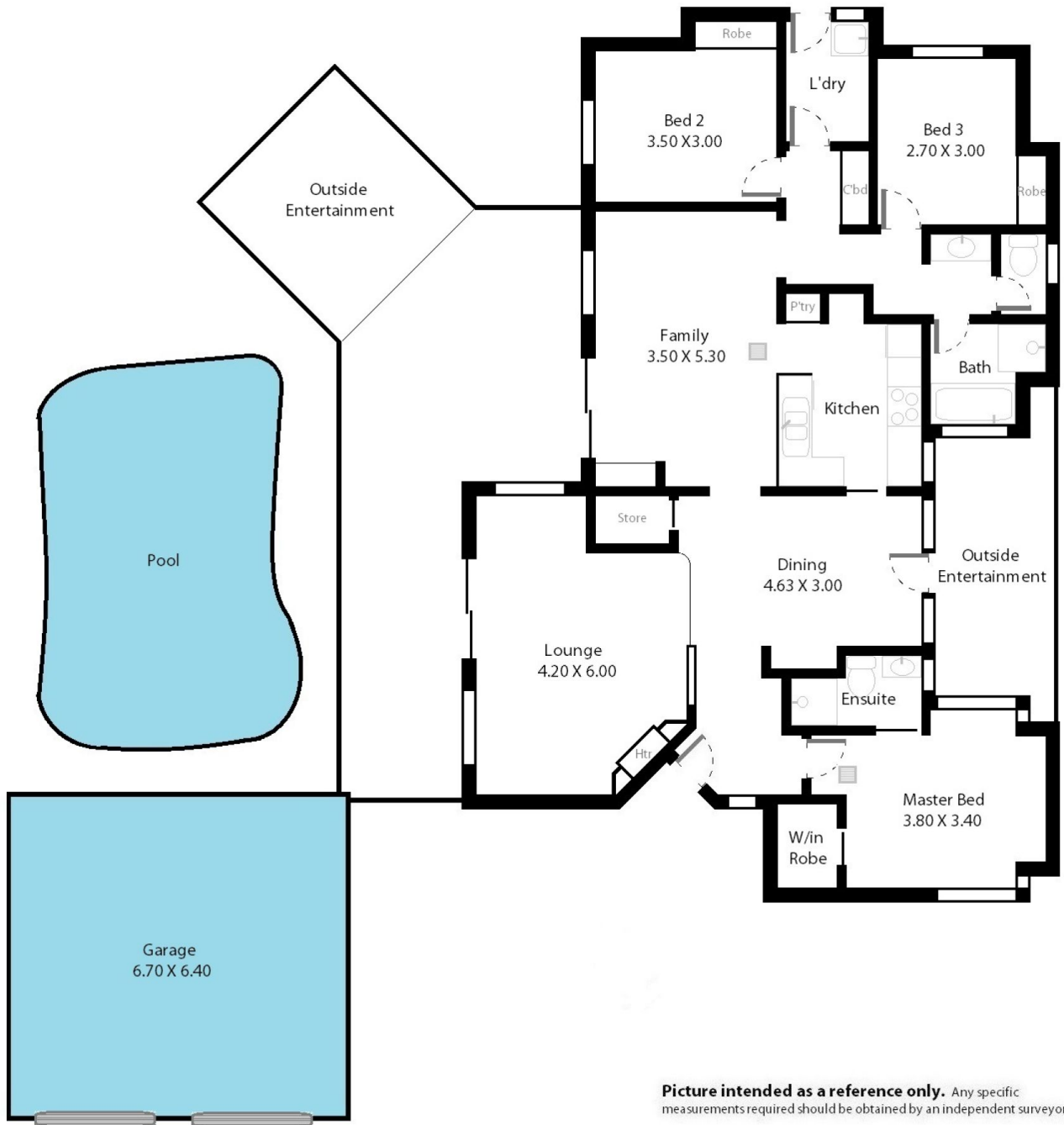
[For full version visit the website](https://www.magain.com.au/property/33-grevillea-road-aberfoyle-park-sa/843702)

Type : House
Building Size : 16 sqm
Land Size : 695 sqm
View : <https://www.magain.com.au/property/33-grevillea-road-aberfoyle-park-sa/843702>
2



Andrew Boswell
08 8381 6000

33 Grevillea Road Aberfoyle Park, South Australia.



Picture intended as a reference only. Any specific measurements required should be obtained by an independent surveyor.