

MAGAIN



28 Grey Box Avenue NOARLUNGA CENTRE SA

3 2 4

Located in a quiet street within walking distance to the shops and public transport, with both a high school and primary school and gorgeous beaches nearby, this beautifully presented townhouse is perfect for first home buyers, downsizers and investors. The lucky owners will never be too far from the city in this low maintenance, young 2010 home.

Offering a bright open plan living/dining and kitchen area, with a separate family area, downstairs is ideal for those with a need for space. The kitchen is well appointed with a gas cooktop, stainless steel appliances and a breakfast bar. In the separate laundry, there is a convenient adjacent second toilet, cupboards for easy storage and indoor access to the garage... practicality at its best.

Type : House

View : <https://www.magain.com.au/property/28-grey-box-avenue-noarlunga-centre-sa/8437023>

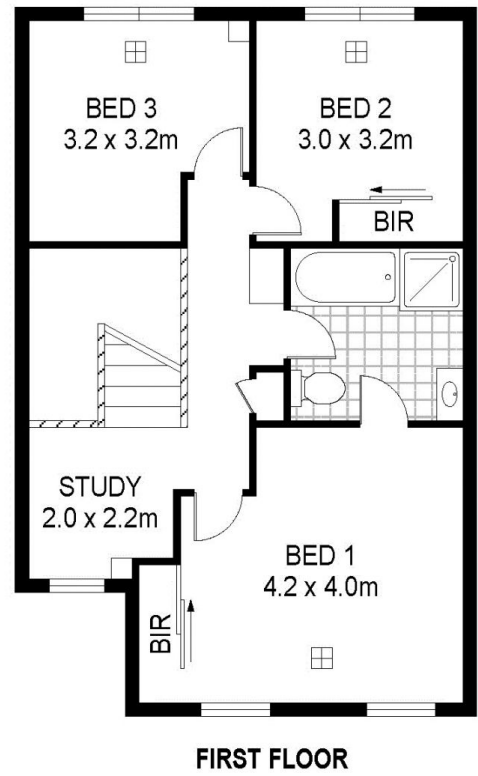
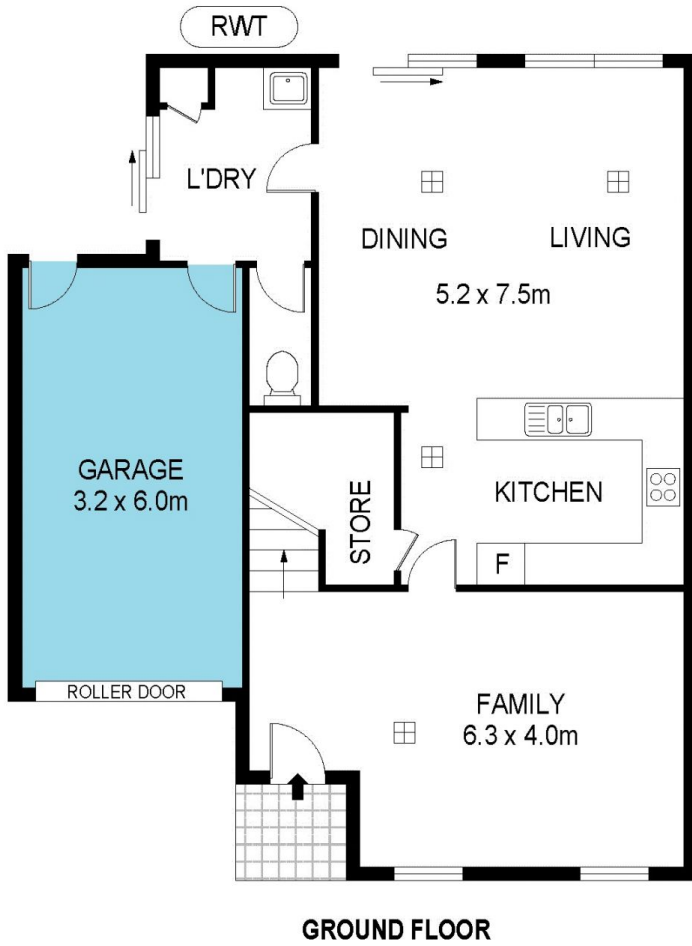


Scott McPharlin
08 8382 0029

[For full version visit the website](https://www.magain.com.au)

<https://www.magain.com.au>
Magain Real Estate

Shop 15, Woodcroft Market Plaza, 217 Pimpala Road W
08 8381 6000



Scale in metres. Indicative only. Dimensions are approximate. All information contained herein is gathered from sources we believe to be reliable. However we cannot guarantee its accuracy and interested persons should rely on their own enquiries

INT : 128m²
GARAGE : 20m²

28 Grey Box Avenue, Noarlunga Centre