

MAGAIN



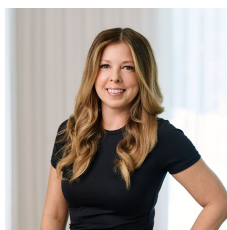
11 Apsley Court PORT NOARLUNGA SA

3  2  2 

This beautifully built family home in a quiet court, will tick many boxes for today's growing family, with its spacious and functional floor plan giving plenty of space both inside & out. With its wonderful position close by to the beach and Pt Noarlunga township, perfect for catching up for lunch, plus just a short walk to the Onkaparinga river if you are keen to throw a fishing line.

Offering three good size bedrooms, master with walk in robe & ensuite, formal lounge & dining room at the front of the home, tiled open plan family room & meals area, lovely timber kitchen featuring dishwasher and picture windows out over the gardens. There is also a three way bathroom, to make busy life easier plus good sized laundry.

Type : House
Building Size : 19 sqm
Land Size : 590 sqm
View : <https://www.magain.com.au/property/11-apsley-court-port-noarlunga-sa/8437079>



Zoe Ball
08 8381 6000

[For full version visit the website](https://www.magain.com.au)

24 Apsley Court Port Noarlunga, South Australia.



Picture intended as a reference only. Any specific measurements required should be obtained by an independent surveyor.