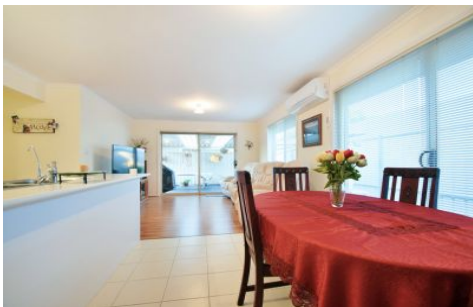


MAGAIN



17A Dominic Crescent MORPHETT VALE SA

3 2 3

Privately nestled away from the view of the street, this fantastic home offers modern low maintenance living, close to schools, shops and transport. A perfect opportunity for those looking to get into their first home, downsize or invest.

The first things you'll notice about this property is the great amount of space for parking your vehicles under the undercover carport. With 3 car spaces for vehicles, trailers, boats or bikes, you name it, there's room and it's off the street.

The large master bedroom situated at the front of the house features a walk-in robe and a light and modern ensuite. Bedroom 2 and 3 are both of good size and sport

Type : House
Land Size : 361 sqm
View : <https://www.magain.com.au/property/17a-dominic-crescent-morphett-vale-sa/8437089>



Scott McPharlin
08 8382 0029

[For full version visit the website](https://www.magain.com.au)

17a Domonic Crescent Morphett Vale, South Australia.



Picture intended as a reference only. Any specific measurements required should be obtained by an independent surveyor.