

# MAGAIN



11-1 Oak Avenue CLOVELLY PARK SA

2 1 1

Call Scott McPharlin for viewing times.

This is truly a unique investment opportunity for those of us who don't want the hassle of selecting tenants or the risk of having no rent coming in whilst finding new ones. Securely leased for another 9 years of a 10 year lease from January 2014 this amazing apartment is situated in a location so convenient it really stacks up. then take into account the full depreciation schedule with a forecast \$6,292 in deductions for the 15/16 financial year.

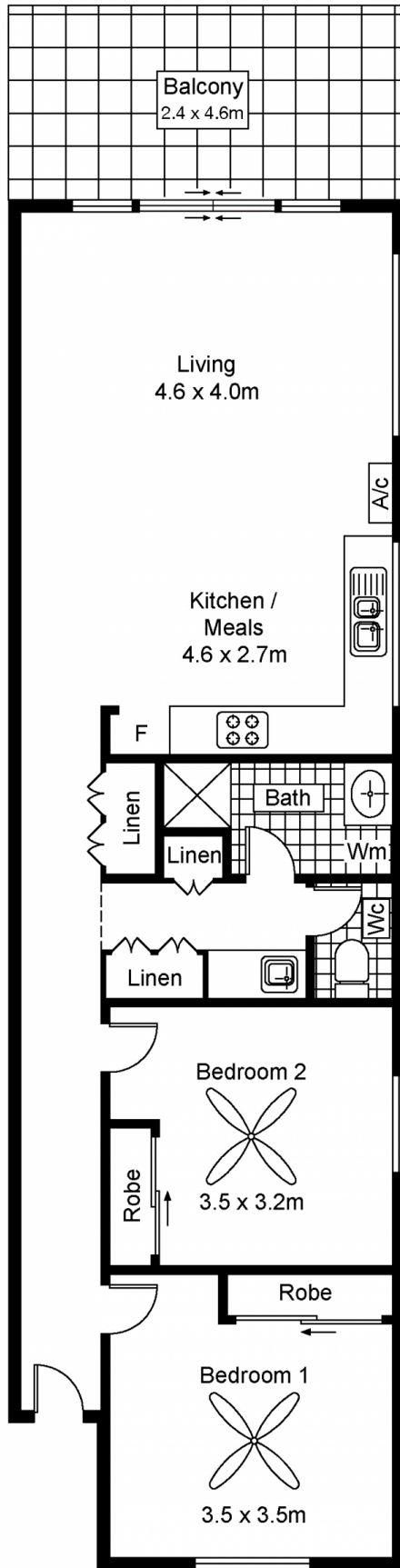
Almost adjacent the Tonsley rail station for excellent public transport access to the city it's location really stands out as it is only two minutes to Marion shopping centre, Flinders University and Flinders hospital and the same distance to

[For full version visit the website](https://www.magain.com.au)

**Type** : Unit  
**Building Size** : 9 sqm  
**Land Size** : 82 sqm  
**View** : <https://www.magain.com.au/property/11-1-oak-avenue-clovelly-park-sa/8437094>



**Scott McPharlin**  
08 8382 0029



Scale in metres. Indicative only. Dimensions are approximate. All information contained herein is gathered from sources we believe to be reliable. However we cannot guarantee its accuracy and interested persons should rely on their own enquiries.

## Unit 11, 1 Oak Avenue, Clovelly Park