

MAGAIN



6A Neath Avenue SOUTH BRIGHTON SA

2 1 2

Call Mike or Zoe for inspection times.

If you have been thinking about a change to a popular, well held suburb then this is your chance. This superbly built two storey home will suit young executives or busy couples looking for a low maintenance home that is high on style. Perfect for relaxing and entertaining at home or go for a short drive to Jetty road for a multitude of cafes, a stroll along the beach, or shopping at Westfield Marion, it is all so close by.

The top floor offers two large bedrooms, both with split system air conditioners, robes and their own balconies, a study nook and the two way main bathroom with ensuite access to the master suite. Downstairs is the centralised

[For full version visit the website](https://www.magain.com.au/property/6a-neath-avenue-south-brighton-sa/8437136)

Type : House
Building Size : 17 sqm
View : <https://www.magain.com.au/property/6a-neath-avenue-south-brighton-sa/8437136>

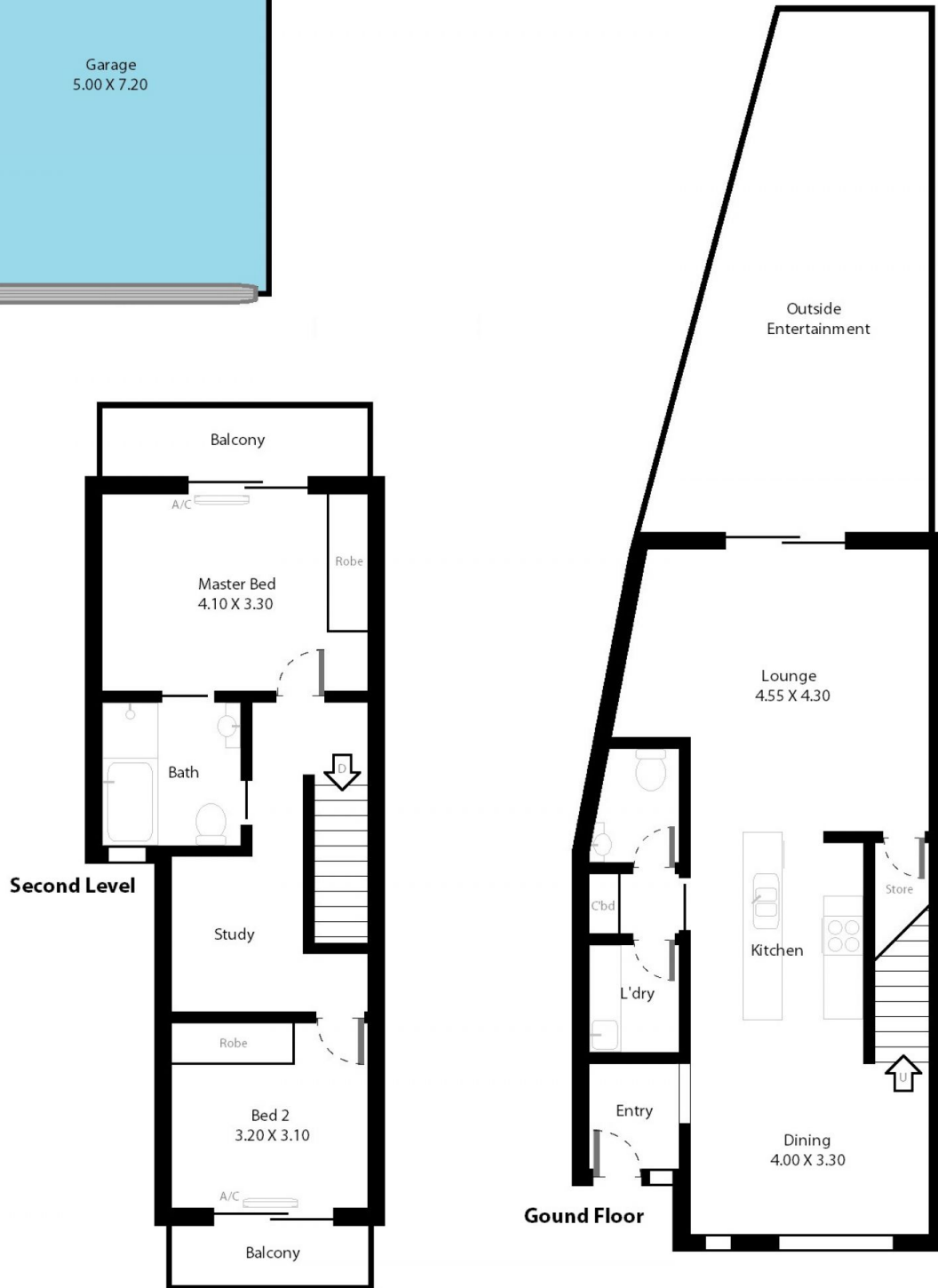
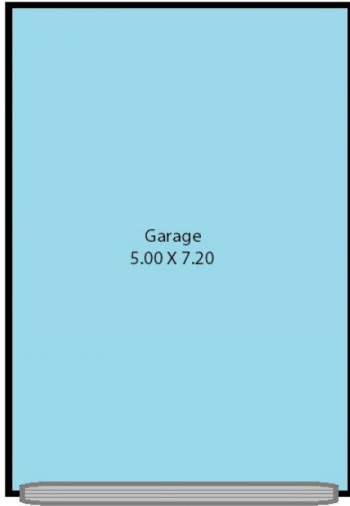


Zoe Ball
08 8381 6000

<https://www.magain.com.au>
Magain Real Estate

Shop 15, Woodcroft Market Plaza, 217 Pimpala Road W
08 8381 6000

6a Neath Avenue South Brighton, South Australia.



Picture intended as a reference only. Any specific measurements required should be obtained by an independent surveyor.