




MAGAIN



48 Serafino Drive NOARLUNGA DOWNS SA

4  2  2 

Well finished, welcoming, special Just some of the things, you will think upon entering this beautiful Fairmont family home located on a commanding corner block in ?The Point? Estate, with frontal views across to Port Noarlunga and superb beaches just a small drive away.

From the onset, the entry with coffered ceilings, LED lighting and high gloss tiles sets the standard for this home. The master bedroom with walk-in robe and ensuite with his/hers vanity, will make you smile. 2 large carpeted bedrooms are situated at the rear of the house, perfect for the growing family or guests. The study/4th bedroom and home theatre provide ideal spaces for work and play, with super fast NBN connection possible in the near future.

Type : House

View : <https://www.magain.com.au/property/48-serafino-drive-noarlunga-downs-sa/8437150>



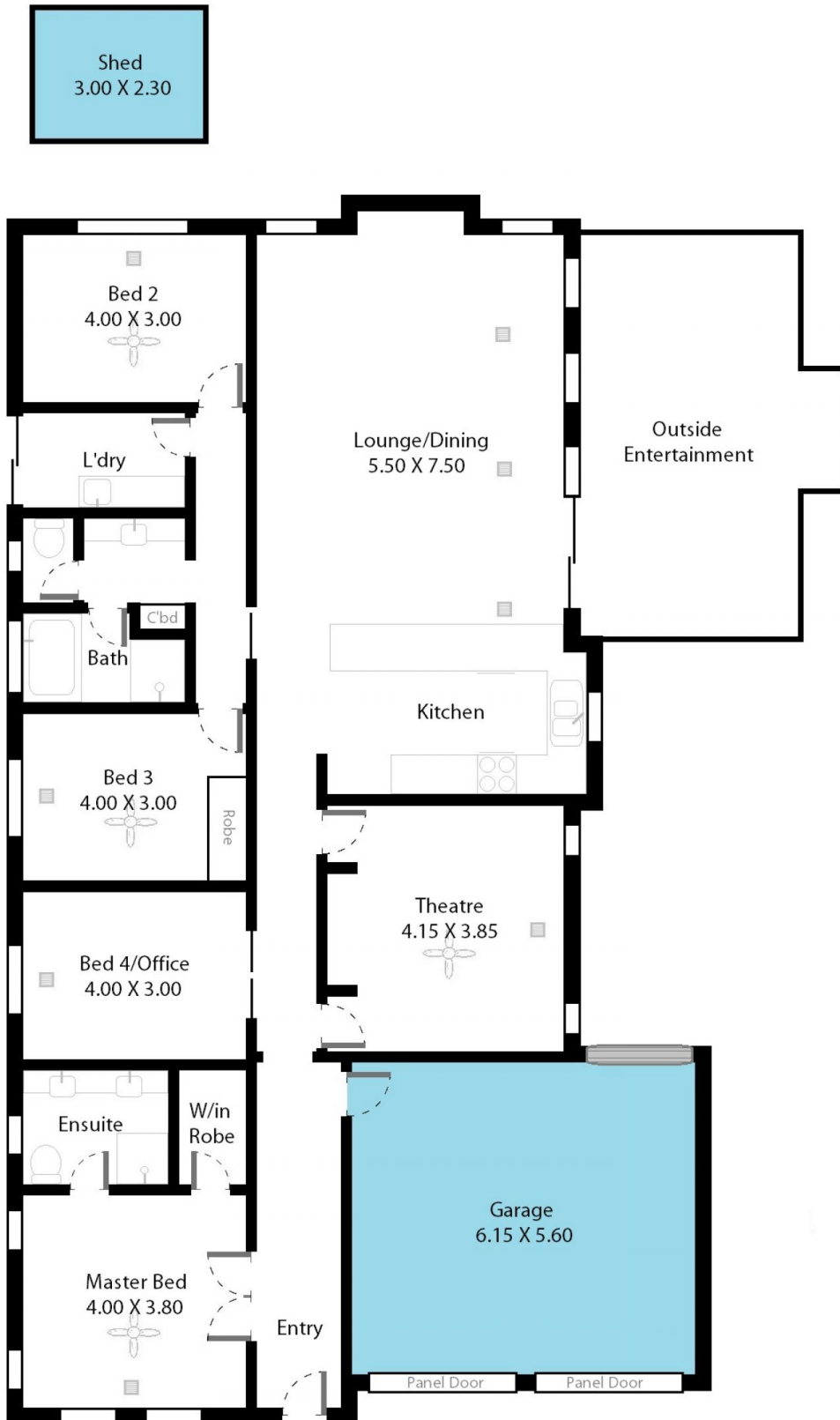
Scott McPharlin
08 8382 0029

[For full version visit the website](https://www.magain.com.au)

<https://www.magain.com.au>
Magain Real Estate

Shop 15, Woodcroft Market Plaza, 217 Pimpala Road W
08 8381 6000

48 Serafino Drive Noarlunga Downs, South Australia.



Picture intended as a reference only. Any specific measurements required should be obtained by an independent surveyor.