

MAGAIN



26 Arkle Place WOODCROFT SA

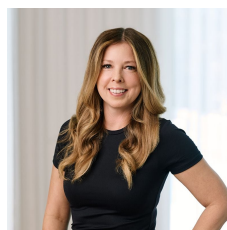
4  2  2 

Contact Mike Dobbin or Zoe Usher for further details.

Situated in a quiet cul-de-sac in the newer part of Woodcroft and surrounded by other quality builds, this absolutely stunning family home is sure to tick all the boxes for the most fastidious buyer. Built in 2010 by the current owners, there has been no expense spared over this 292 sqm home, with absolute quality fixtures & fittings throughout as well as plenty of extras. One of these extras include a huge 5.7kw solar system with a generous 44c feed in tariff until 2028; adding up to massive savings for your family.

Walking up the glass sided staircase you will find four large bedrooms, including a huge master suite with balcony access with Adelaide hills views, parents retreat and large double doors on entrance. As well as a stunning ensuite

Type : House
Building Size : 31 sqm
Land Size : 408 sqm
View : <https://www.magain.com.au/property/26-arkle-place-woodcroft-sa/8437163>



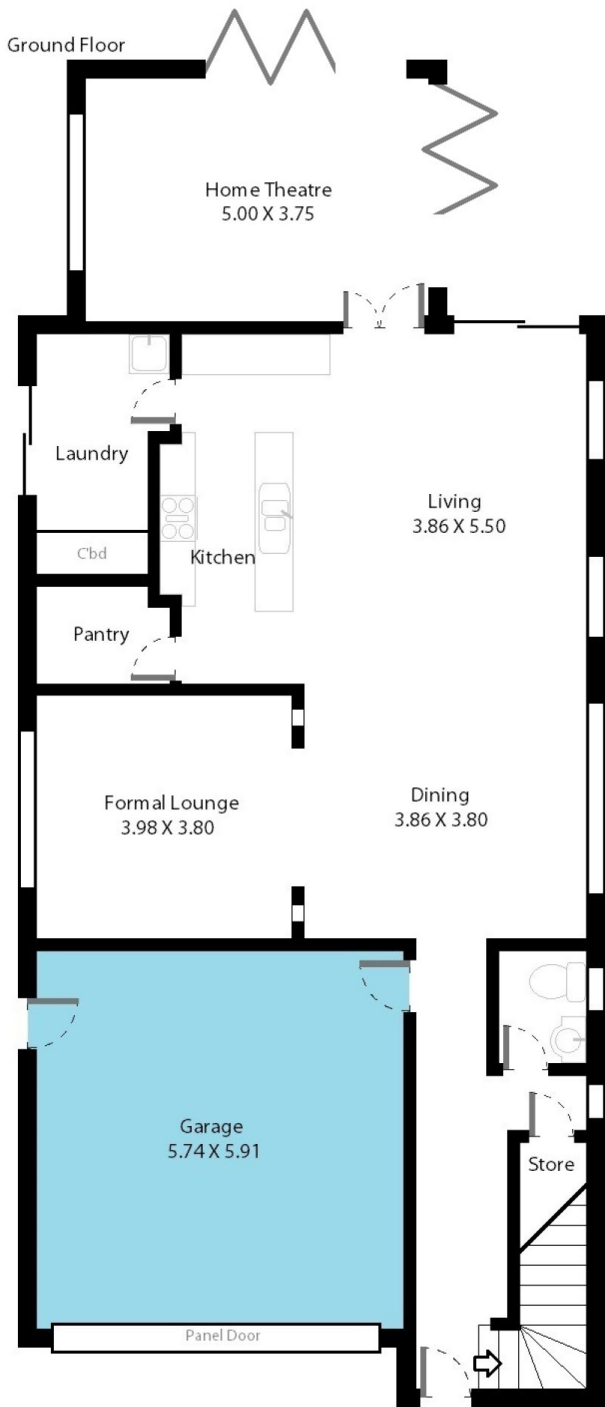
Zoe Ball
08 8381 6000

[For full version visit the website](https://www.magain.com.au)

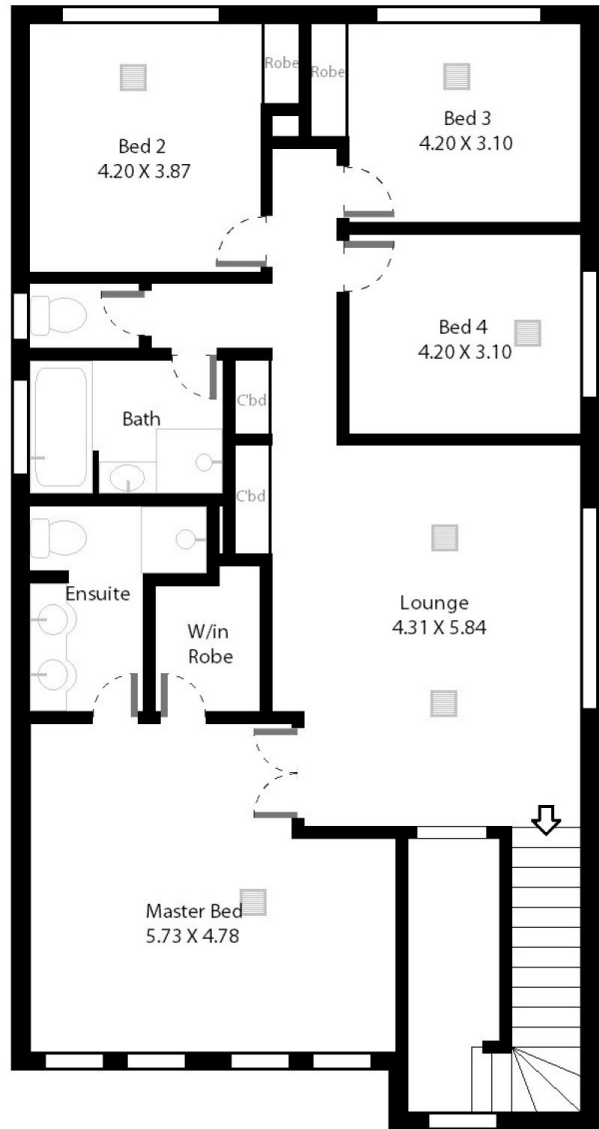
<https://www.magain.com.au>
Magain Real Estate

Shop 15, Woodcroft Market Plaza, 217 Pimpala Road W
08 8381 6000

26 Arkle Place Woodcroft, South Australia.



Second Level



Picture intended as a reference only. Any specific measurements required should be obtained by an independent surveyor.