

MAGAIN



42 Champagne Crescent WOODCROFT SA

3 1 3

Call Mike Dobbin or Zoe Usher for inspection details.

Situated in the heart of Woodcroft, is this spacious home on a large 710sqm corner block. It is a great option for anyone looking for the perfect 'Man Cave', a home workshop or room to store classic cars; this huge 6x9 double shed with street access is the answer you have been looking for, plus there is still more room for secure parking for a boat or a caravan. If you have been looking for a home with 'a shed' this is the one!

The home itself offers three good size bedrooms, all with robes, and the master with ensuite access to the three way main bathroom. To the front of the home is the formal lounge with feature curved wall in the hallway, open plan

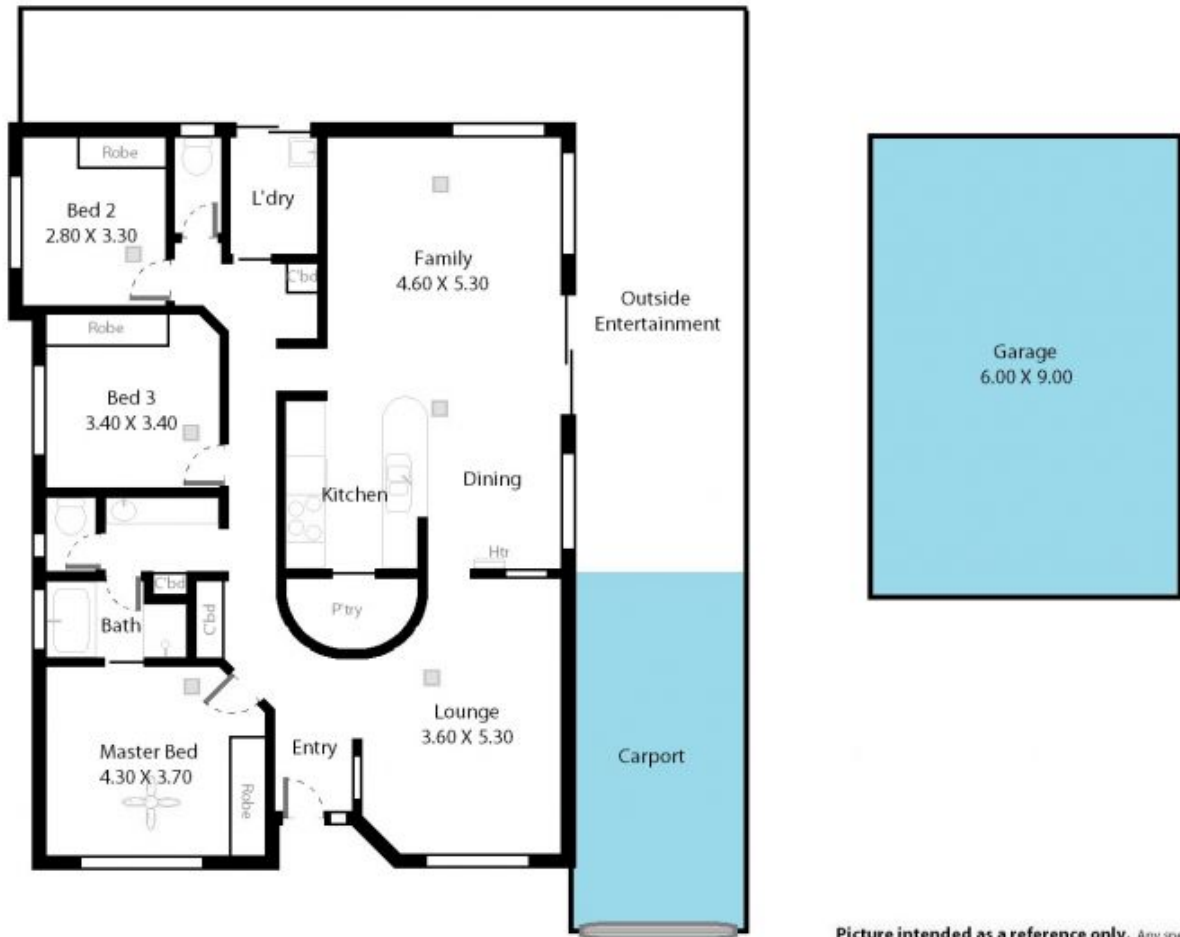
[For full version visit the website](https://www.magain.com.au/property/42-champagne-crescent-woodcroft-sa/8437170)

Type : House
Building Size : 17 sqm
Land Size : 710 sqm
View : <https://www.magain.com.au/property/42-champagne-crescent-woodcroft-sa/8437170>



Zoe Ball
08 8381 6000

42 Champagne Crescent Woodcroft, South Australia.



Picture intended as a reference only. Any specific measurements required should be obtained by an independent surveyor.