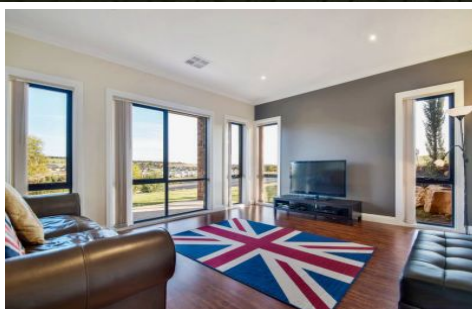


# MAGAIN



56 Sylvan Circuit NOARLUNGA DOWNS SA

5 3 6

Call Scott to organise an inspection

Prepare yourself for the grandeur of this two storey family home, situated on a huge corner block overlooking reserves. Offering 5 large bedrooms, plenty of living space, outdoor living area and a pool, this one is a must see!

Upon entry the standard is set with a double height void, high ceilings and large tiled floors throughout. Upstairs, a spacious family retreat with comfort plus glazed windows throughout, connects a total of 5 bedrooms with Bedroom 2 with WIR, 3 and 4 with BIR. All complete with quality fixtures, fittings and stone bench-tops, no expense has been spared with the two bathrooms to accommodate bedrooms 2 to 5.

[For full version visit the website](https://www.magain.com.au/property/56-sylvan-circuit-noarlunga-downs-sa/8437171)

**Type** : House  
**Building Size** : 43 sqm  
**Land Size** : 934 sqm  
**View** : <https://www.magain.com.au/property/56-sylvan-circuit-noarlunga-downs-sa/8437171>

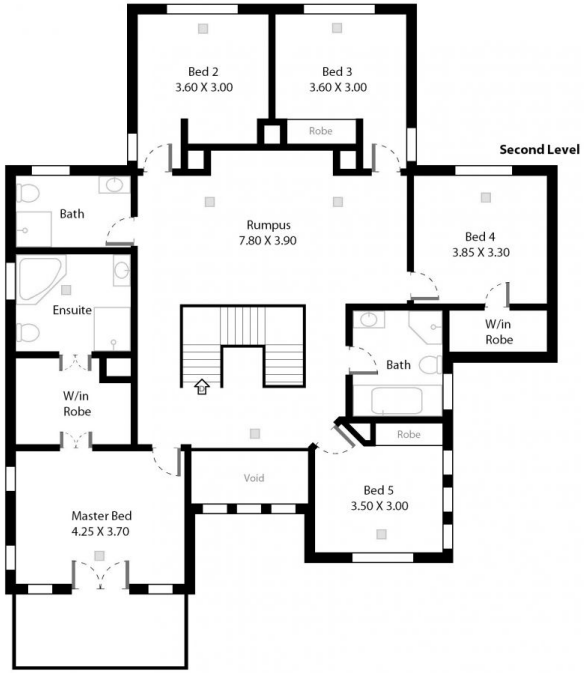
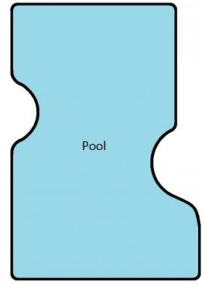


**Scott McPharlin**  
08 8382 0029

<https://www.magain.com.au>  
Magain Real Estate

Shop 15, Woodcroft Market Plaza, 217 Pimpala Road W  
08 8381 6000

56 Sylvan Circuit Noarlunga Downs, South Australia.



Picture intended as a reference only. Any specific measurements should be obtained by an independent surveyor.