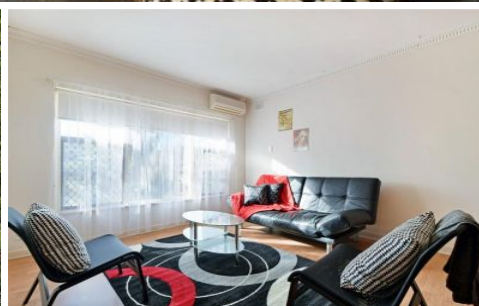
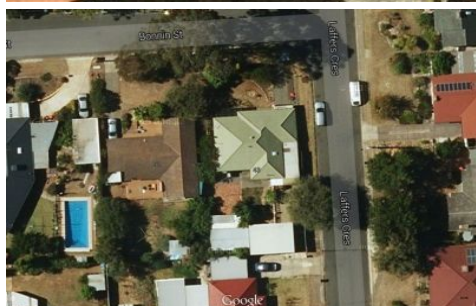


MAGAIN



43 Laffers Crescent REYNELLA SA

3 1 3

Please contact Mike Dobbin or Zoe Usher for inspection details.

Set on a 670sqm relatively flat corner block, this solid brick home offers a perfect opportunity for first home buyers looking to enter the market, young families looking for space or even savvy investors looking to start or grow their property portfolio. There is also great potential for a developer to subdivide & redevelop, having the potential of two blocks with their own street frontage (stcc). Set in this handy location it is close by to the Old Reynella Township plus plenty of local shops, transport & easy access to the Southern expressway.

The spacious floor plan offers plenty of room for the whole

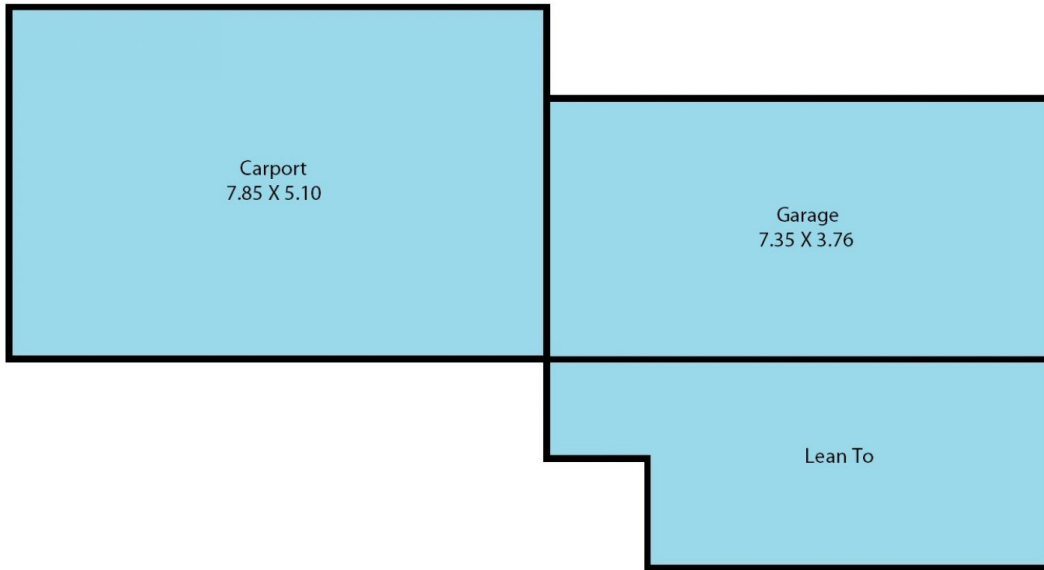
[For full version visit the website](https://www.magain.com.au/property/43-laffers-crescent-reynella-sa/8437179)

Type : House
Land Size : 670 sqm
View : <https://www.magain.com.au/property/43-laffers-crescent-reynella-sa/8437179>



Zoe Ball
08 8381 6000

43 Laffers Crescent Reynells, South Australia.



Picture intended as a reference only. Any specific measurements required should be obtained by an independent surveyor.