

MAGAIN



8 Yaldara Close WOODCROFT SA

3  1  1 

Please contact Mike Dobbin & Zoe Usher for inspection details.

This charming home is situated in a quiet court across from a park & garden making it a beautiful tranquil location in the heart of Woodcroft. This low maintenance home on a neat block will suit first home buyers looking to enter the market or savvy investors looking to start or grow their property portfolio, whoever you are, this represents great value buying.

The functional floor plan offers a master bedroom with walk in robe & ensuite access to the three way main bathroom, open plan living area with floating timber floors alongside the tiled dining area with bay window and adjacent kitchen

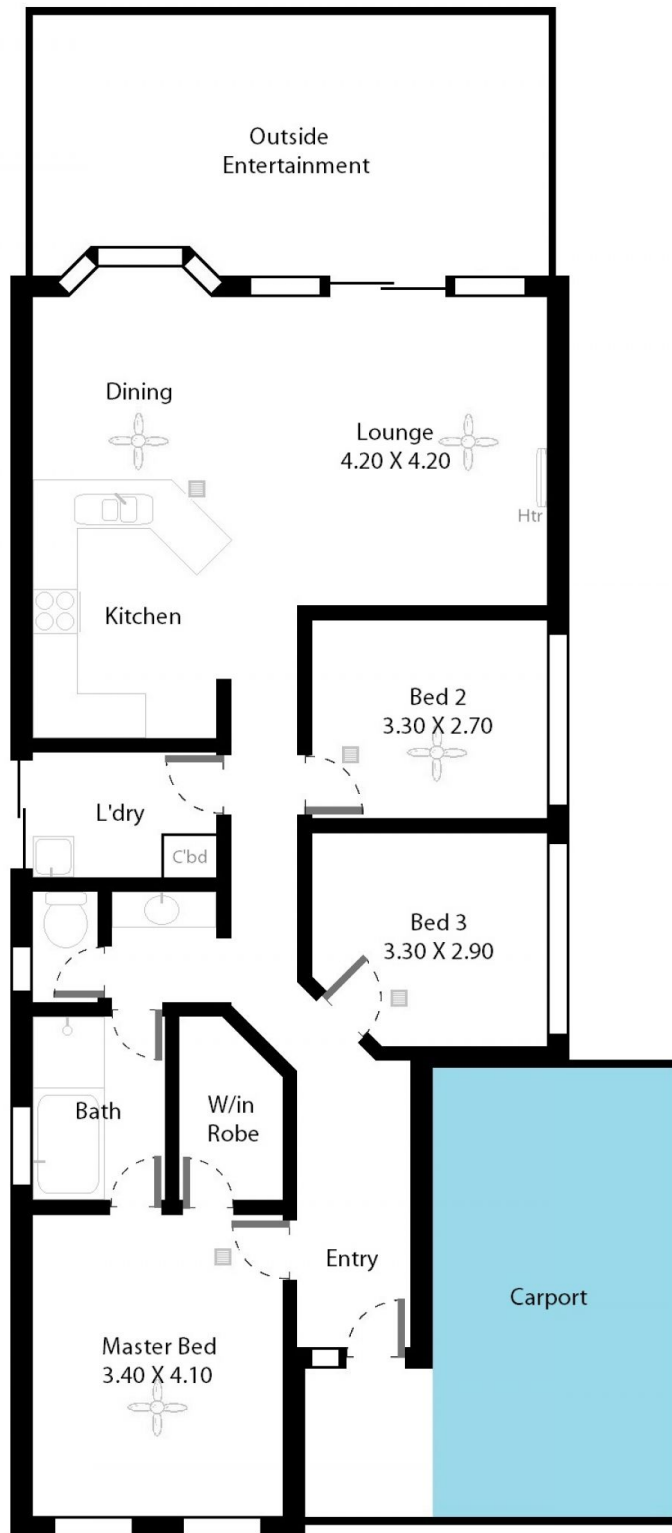
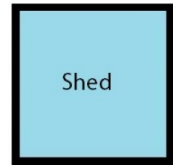
[For full version visit the website](https://www.magain.com.au/property/8-yaldara-close-woodcroft-sa/8437185)

Type : House
Building Size : 12 sqm
Land Size : 300 sqm
View : <https://www.magain.com.au/property/8-yaldara-close-woodcroft-sa/8437185>



Zoe Ball
08 8381 6000

8 Yaldara Close Woodcroft, South Australia.



Picture intended as a reference only. Any specific measurements required should be obtained by an independent surveyor.