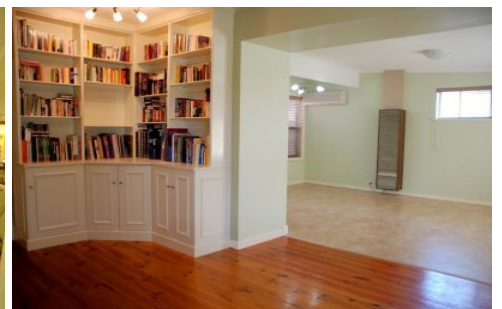


MAGAIN



8 Elm Grove OAKLANDS PARK SA

3  1  2 

Contact Andrew Boswell for further details.

Set in a quiet street in a suburb undergoing some fantastic re-development and so close to Westfield Marion Shopping Centre and main transport routes (Bus and Oaklands Train Station). On an allotment of approx. 700sqm, this property is currently tenanted to great tenants until March 2016. With a home built in 1958 but with some updating done internally, represents a great long term investment for development (stcc) or live in and down the track renovate and profit in this pivotal location.

The property has an entrance hallway, large dining area with attractive polished floorboards, open plan lounge and overlooked by the kitchen. Three good sized bedrooms (2 carpeted) and updated bathroom. Separate toilet and laundry. Polished floorboards throughout alot of the home.

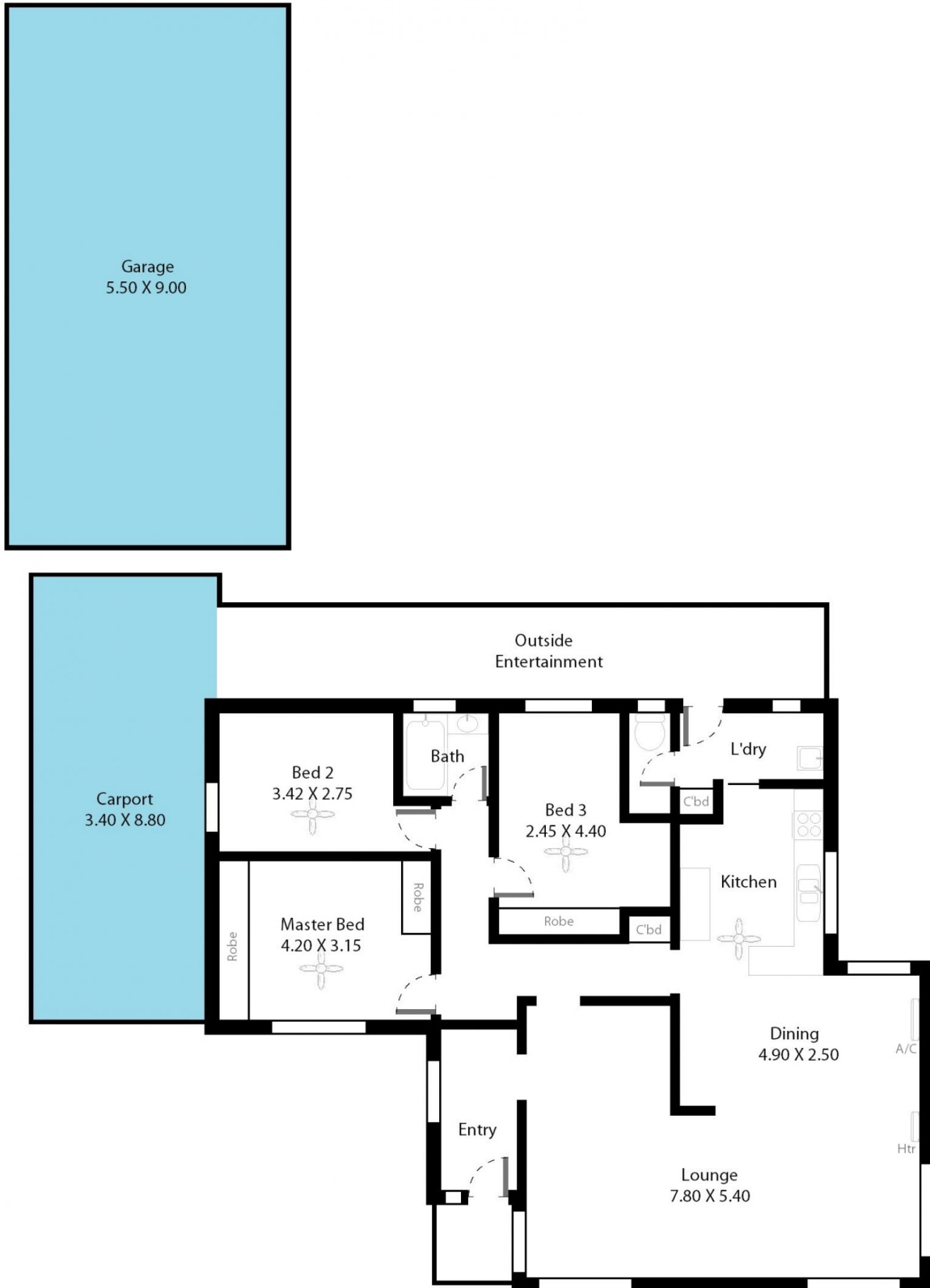
[For full version visit the website](https://www.magain.com.au/property/8-elm-grove-oaklands-park-sa/8437190)

Type : House
Building Size : 13 sqm
Land Size : 700 sqm
View : <https://www.magain.com.au/property/8-elm-grove-oaklands-park-sa/8437190>



Andrew Boswell
08 8381 6000

8 Elm Grove Oaklands Park, South Australia.



Picture intended as a reference only. Any specific measurements required should be obtained by an independent surveyor.