




MAGAIN



21 Chifley Crescent TROTT PARK SA

3  1  1 

Please contact Mike Dobbin or Zoe Usher for inspection details.

Situated on a quiet court, this charming home offers a great opportunity for first home buyers, young couples or growing families. The functional floor plan gives plenty of space for living while the large 620sqm block means plenty of room for the kids to play in the backyard.

Offering three good size bedrooms, master with large robes, family bathroom with separate toilet, L shaped formal lounge & dining area, separate family room with slate floors, raw brick bar and beautiful exposed timber beams completing the rustic look. The centralised kitchen has plenty of bench & cupboard space plus a very handy

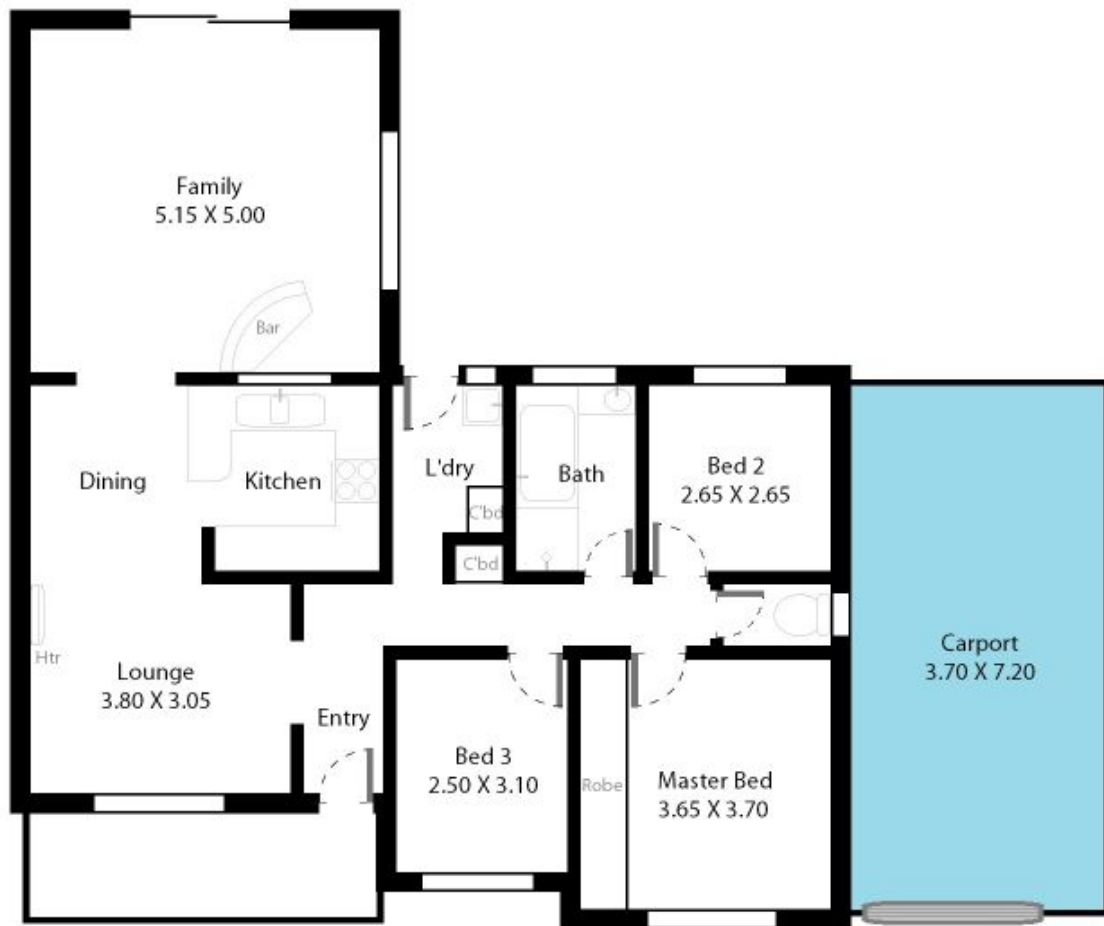
[For full version visit the website](https://www.magain.com.au/property/21-chifley-crescent-trott-park-sa/8437191)

Type : House
Building Size : 9 sqm
Land Size : 620 sqm
View : <https://www.magain.com.au/property/21-chifley-crescent-trott-park-sa/8437191>



Zoe Ball
08 8381 6000

21 Chifley Crescent Trott Park, South Australia.



Picture intended as a reference only. Any specific measurements required should be obtained by an independent surveyor.