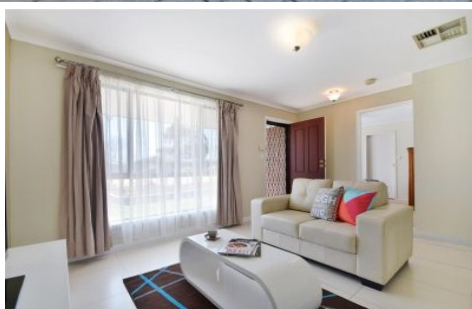


MAGAIN



8 Topaz Close WOODCROFT SA

3  2  2 

Please contact Mike Dobbin or Zoe Usher for inspection details.

Situated in a quiet court this beautifully presented property is perfectly set up as a low maintenance family home. The established & well maintained gardens, sensational entertaining area and functional floor plan all combine to give you the feeling of a warm & comfortable home. The close vicinity to local shops, schools, transport and Thaxted golf course adds to this homes allure.

Offering three good size bedrooms, master with ensuite & walk in robe, main bathroom for the family with separate toilet, a light filled formal lounge to the front of the home and a large open plan living & dining area with 600mm tiles

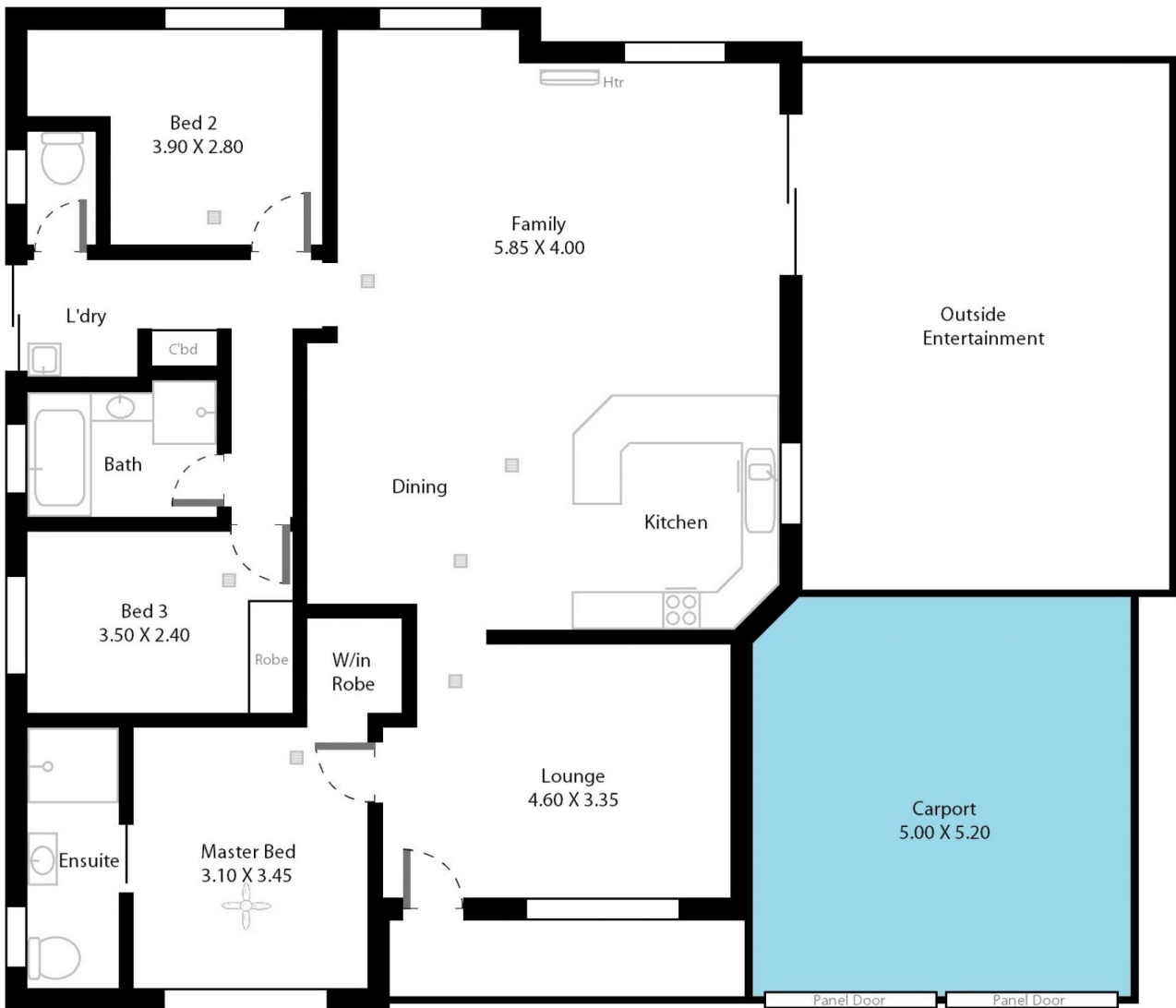
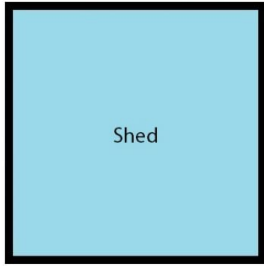
[For full version visit the website](https://www.magain.com.au/property/8-topaz-close-woodcroft-sa/8437199)

Type : House
Building Size : 14 sqm
Land Size : 556 sqm
View : <https://www.magain.com.au/property/8-topaz-close-woodcroft-sa/8437199>



Zoe Ball
08 8381 6000

8 Topaz Close Woodcroft, South Australia.



Picture intended as a reference only. Any specific measurements required should be obtained by an independent surveyor.