

# MAGAIN



## 8 Willow Court SEAFORD SA

3  1  1 

If convenience is what your searching for then this perfectly located home between Moana beach, Seaford Shopping Centre and at the end of a cul-de-sac, then Willow Court is definitely one that will suit first home buyers or downsizers.

One of the big features of this property is the amount of parking you have out the front with space for your caravan or a boat.

As you enter the home you are met with an open plan living, dining and kitchen area. 3 bedrooms are located down the hallway with bedroom 2 having a built-in robe. And they are all serviced by the recently updated bathroom which contains a new vanity and a separate bath and shower.

**Type** : House  
**Land Size** : 482 sqm  
**View** : <https://www.magain.com.au/property/8-willow-court-seaford-sa/8437202>



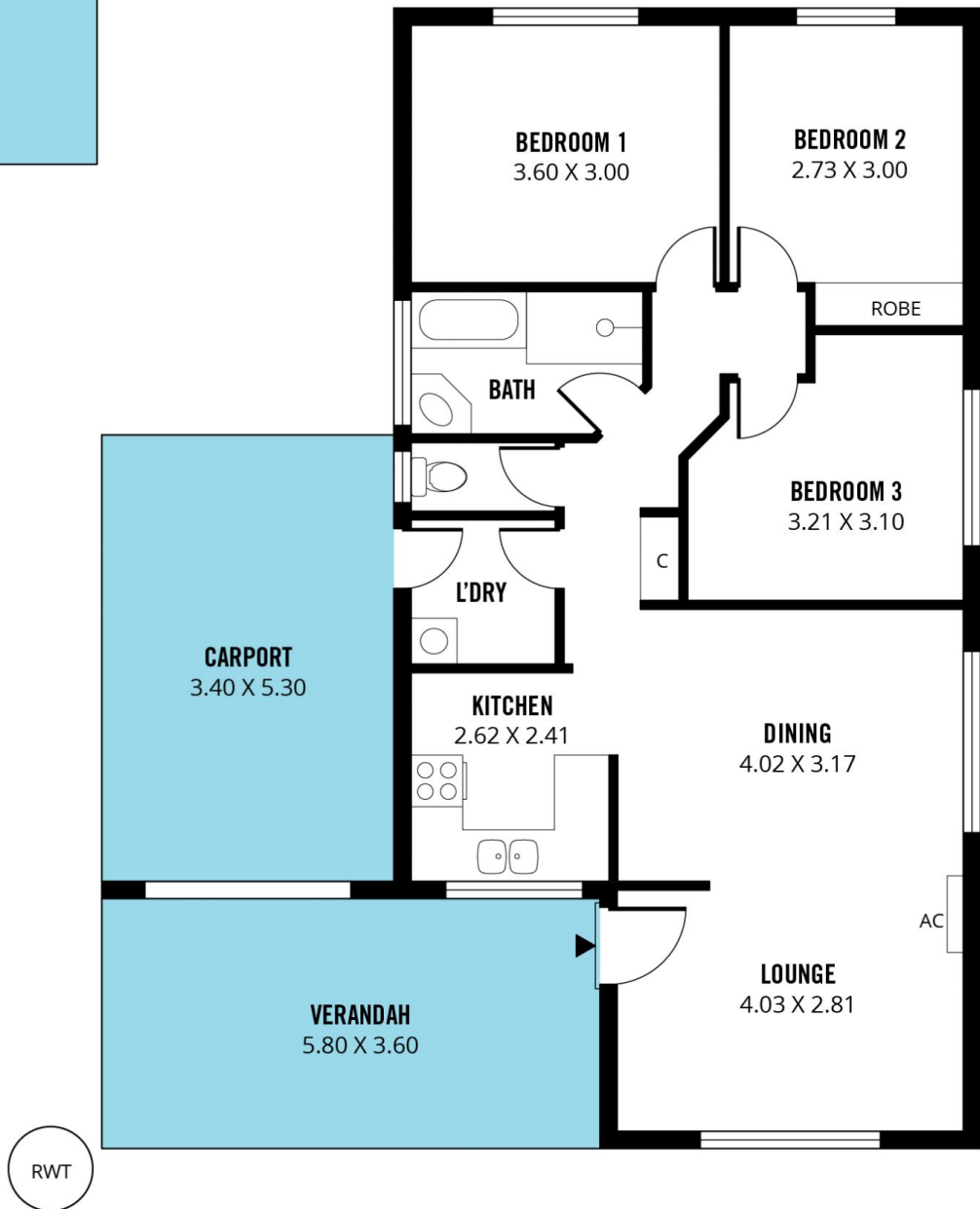
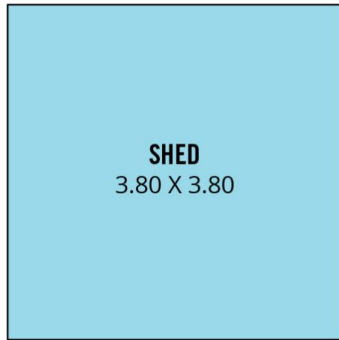
**Scott McPharlin**  
08 8382 0029

[For full version visit the website](https://www.magain.com.au)

<https://www.magain.com.au>  
Magain Real Estate

Shop 15, Woodcroft Market Plaza, 217 Pimpala Road W  
08 8381 6000

RWT



Scale in metres. This drawing is for illustration purposes only. All measurements are approximate and details intended to be relied upon should be independently verified.

Produced by **The Fotobase Group**