

MAGAIN



2-1 Stonehouse Avenue PLYMPTON SA

2 1 1

Contact Andrew Boswell for further details.

Great starter in the market or investment due to its fantastic and convenient location. On the doorstep to main transport to and from the CBD and Glenelg, this unit has always proved a sound investment.

Upstairs unit and with an undercover carport at the front, the unit has both front and rear access. Compact kitchen area with space for laundry and large living/meals room. Air conditioning and also a small balcony. With two bedrooms (master with robes) and bathroom, this property would also respond exceptionally well to further updating. New carpets in bedrooms and hallway, new blinds and a fresh coat of paint on the walls. Bargain buying in this ever popular suburb and the location is about as convenient as it gets. Bus, tram, shops and amenities and airport only a short

Type : Unit
Building Size : 6 sqm
View : <https://www.magain.com.au/property/21-stonehouse-avenue-plympton-sa/8437203>

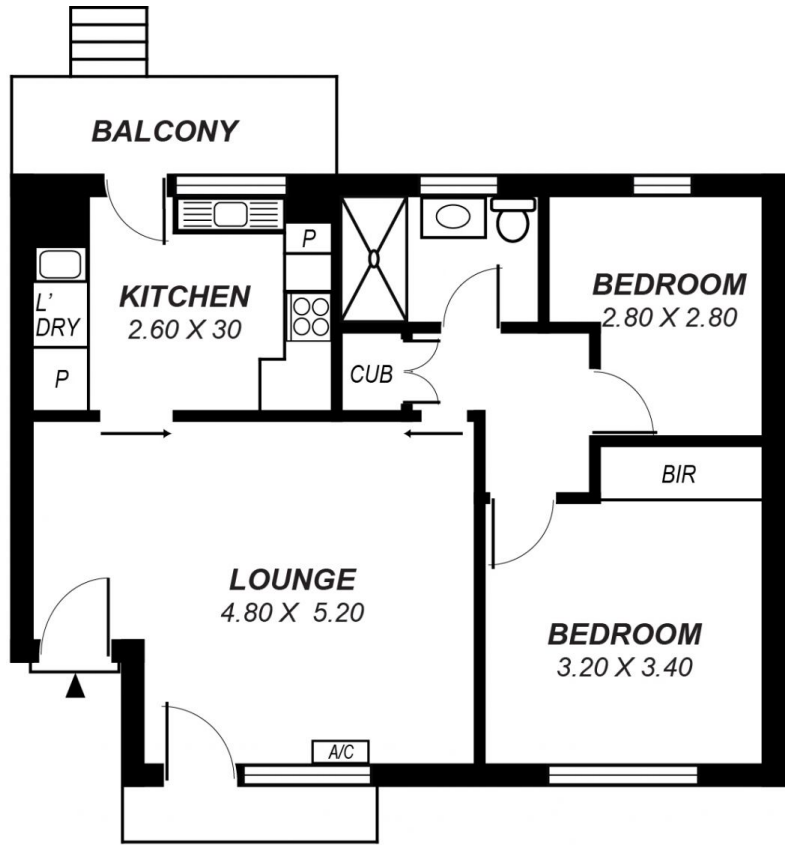
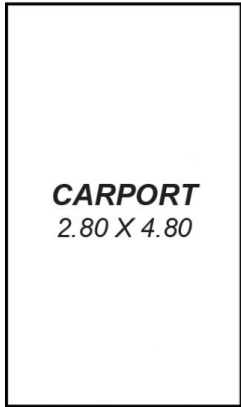


Andrew Boswell
08 8381 6000

[For full version visit the website](https://www.magain.com.au)

<https://www.magain.com.au>
Magain Real Estate

Shop 15, Woodcroft Market Plaza, 217 Pimpala Road W
08 8381 6000



*This drawing is for illustration purposes only .
All measurements are approximate and details intended
to be relied upon should be independently verified.*