




MAGAIN



13 Keirana Avenue PORT NOARLUNGA SA

3  2  1 

Call Scott for viewing times.

This beautiful Rendition home is conveniently nestled in a quiet street located within walking distance to Port Noarlunga Primary and a short drive to Onkaparinga Gorge, Colonnades Shopping Centre, Noarlunga Train Station and the beach! Immaculate throughout with a low maintenance yard, this one would be a great catch for First Home Buyers, Young Families, Downsizers and Investors, looking for a combination of location, lifestyle and value!

First impressions do count with high ceilings, wide entrance, beautiful large format tiles and an attractive colour scheme setting the standard from the onset. The intuitive floorplan includes 3 large bedrooms all with quality

Type : House

View : <https://www.magain.com.au/property/13-keirana-avenue-port-noarlunga-sa/8437217>



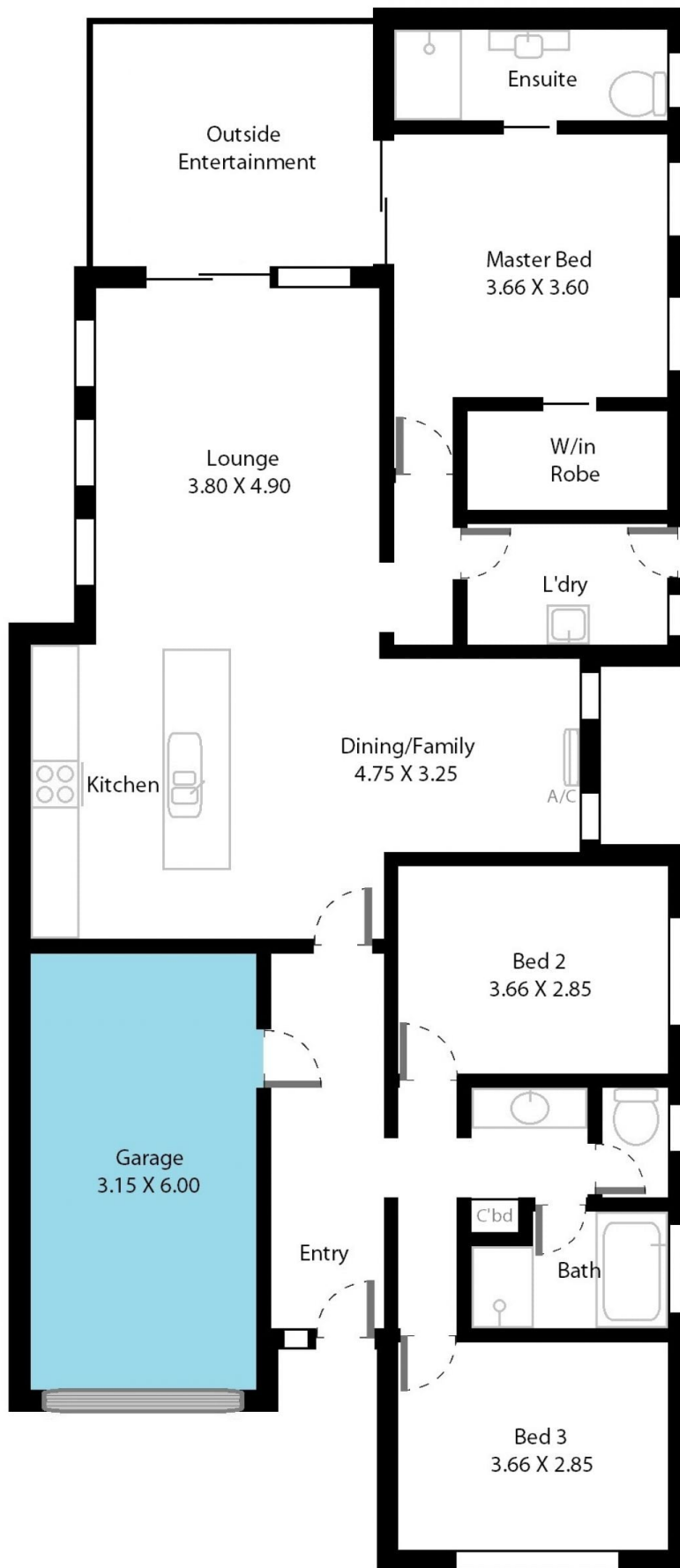
Scott McPharlin
08 8382 0029

[For full version visit the website](https://www.magain.com.au)

<https://www.magain.com.au>
Magain Real Estate

Shop 15, Woodcroft Market Plaza, 217 Pimpala Road W
08 8381 6000

13 Keirana Avenue Port Noarlunga, South Australia.



Picture intended as a reference only. Any specific measurements required should be obtained by an independent surveyor.