

# MAGAIN



## 40 Nash Lane MORPHETT VALE SA

3 1 2

An unbelievable opportunity to snatch up this bargain, roll up the sleeves and reap the return. Priced to please, this home represents great value buying and is sure to be snapped up fast by anyone with some vision for potential.

Offering two bedrooms, plus office (easily turned into a 3rd bedroom) a renovated bathroom, large lounge/rumpus room, family room and dining area with adjacent kitchen. Outside there is plenty of parking space, with room to build a shed or man-cave plus there is a fibreglass inground pool and plenty of paved patio entertaining space with a very low maintenance yard.

Located close by to several schools & local shopping this home on a 470sqm block has so much great potential for

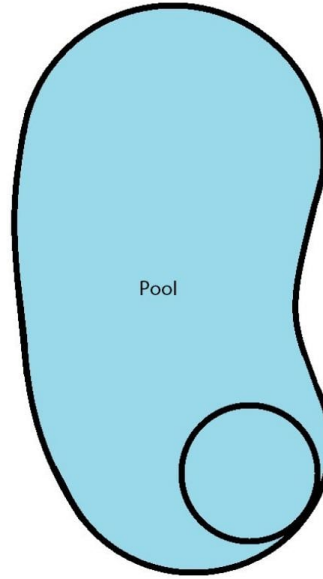
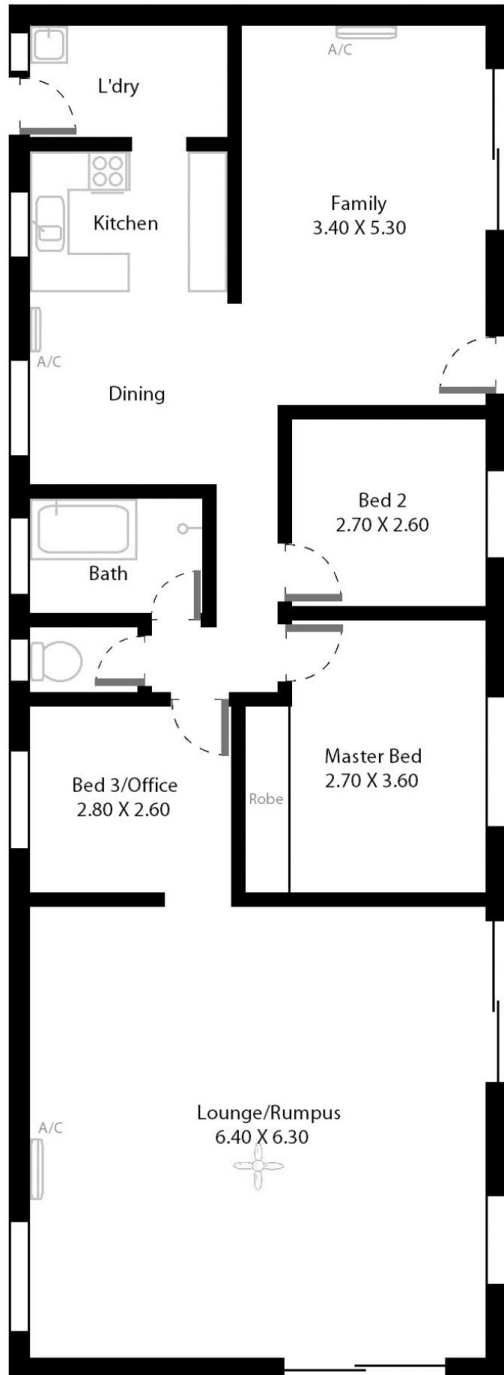
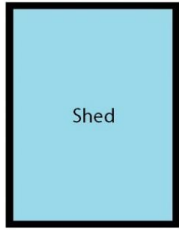
[For full version visit the website](https://www.magain.com.au/property/40-nash-lane-morphett-vale-sa/8437240)

**Type** : House  
**Building Size** : 13 sqm  
**Land Size** : 470 sqm  
**View** : <https://www.magain.com.au/property/40-nash-lane-morphett-vale-sa/8437240>



**Zoe Ball**  
08 8381 6000

40 Nash Lane Morphett Vale, South Australia.



**Picture intended as a reference only.** Any specific measurements required should be obtained by an independent surveyor.