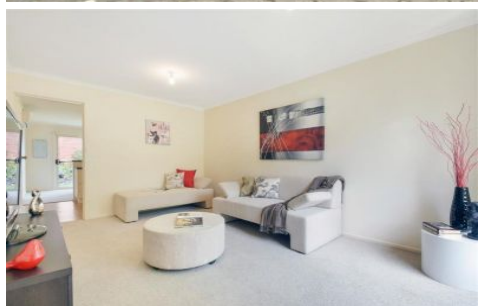


MAGAIN



8-9 Meadowvale Drive COROMANDEL VALLEY SA

2  1  1 

Please contact Mike Dobbin or Zoe Usher for inspection details.

Situated in this wonderful pocket in tightly held Coromandel Valley is this beautiful & well presented courtyard home in a well looked after group. Built in 2001, this home is spacious & modern while still being low maintenance, perfect for first home buyers, busy professional couples and retirees looking to downsize from a traditional block, but still stay local in this great tranquil suburb.

Offering two generous bedrooms, both with robes and master with charming bay window, a large formal lounge room to the front of the home, centralised kitchen with pantry storage and gas cooking and there is a dining area

[For full version visit the website](https://www.magain.com.au/property/89-meadowvale-drive-coromandel-valley-sa/8437244)

Type : House
Building Size : 11 sqm
Land Size : 223 sqm
View : <https://www.magain.com.au/property/89-meadowvale-drive-coromandel-valley-sa/8437244>



Zoe Ball
08 8381 6000

<https://www.magain.com.au>
Magain Real Estate

Shop 15, Woodcroft Market Plaza, 217 Pimpala Road W
08 8381 6000

Unit 8/9 Meadowvale Road Corromandel Valley, South Australia.



Picture intended as a reference only. Any specific measurements required should be obtained by an independent surveyor.