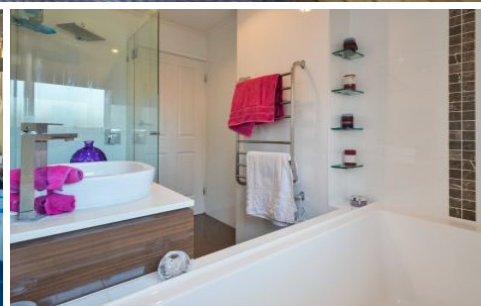


MAGAIN



6 Meadowview Rise ABERFOYLE PARK SA

3 2 4

Call Andrew Boswell for further details and viewing times.

Situated in a beautiful spot opposite the Simpson Reserve in Woodlea Estate, this home represents a great starter or move for a family looking for a little tranquility in their life. With a commanding position with views over the park, tennis courts and playground, the kids and pets have room galore to stretch their legs.

The property has a large front formal lounge with feature windows with views and split system air con. Three good sized bedrooms, all with robes and the master complete with renovated ensuite bathroom. The main bathroom has also been recently renovated and separate w.c. Fabulous kitchen which has also been renovated and finished off with a dishwasher, euro 5-burner cooker and

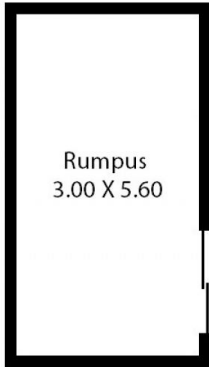
[For full version visit the website](https://www.magain.com.au/property/6-meadowview-rise-aberfoyle-park-sa/8437249)

Type : House
Building Size : 13 sqm
Land Size : 772 sqm
View : <https://www.magain.com.au/property/6-meadowview-rise-aberfoyle-park-sa/8437249>



Andrew Boswell
08 8381 6000

6 Meadowview Rise Aberfoyle Park, South Australia.



Picture intended as a reference only. Any specific measurements required should be obtained by an independent surveyor.