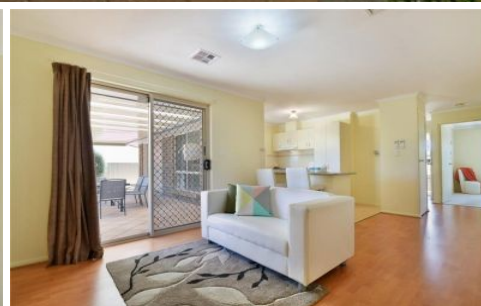


MAGAIN



1 Summerhill Close REYNELLA SA

3 2 1

Please call Mike Dobbin or Zoe Usher for inspection details.

Surrounded by other quality homes, in this popular estate, this 2005 built home offers a functional floor plan with plenty of space and a host of extras. Tucked away on a low maintenance block, it is handy to local reserves, shopping, schools and transport, making it the smart choice for the modern family.

Comprising three good size bedrooms, all with robes & master with walk in robe and ensuite bathroom, a carpeted L shape formal lounge & dining area, open plan family room & meals area with floating floors and the kitchen with Fisher & Paykel double draw dishwasher and gas cooking,

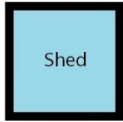
[For full version visit the website](https://www.magain.com.au/property/1-summerhill-close-reynella-sa/8437252)

Type : House
Building Size : 16 sqm
Land Size : 535 sqm
View : <https://www.magain.com.au/property/1-summerhill-close-reynella-sa/8437252>



Zoe Ball
08 8381 6000

1 Summerhill Close Reynella, South Australia.



Picture intended as a reference only. Any specific measurements required should be obtained by an independent surveyor.