

MAGAIN



28 Shillabeer Crescent WOODCROFT SA

3 1 1

This gorgeous home is ideal for those looking to settle in this family friendly area, close to parks, shops and schools. Built in 2000, it features a popular open plan layout that includes floating floors throughout, ducted evaporative cooling and gas heating for year round comfort.

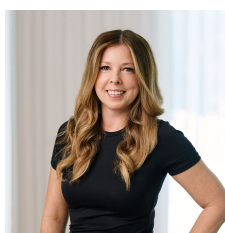
The master has walk in robe and ensuite access to the main bathroom, there is a decked entertaining area and lock up parking.

Currently rented till August for \$340 per week to excellent tenants that would love to stay on, if you are looking for a neat and complete investment property to add to your portfolio this is the one!

Situated handy to all amenities, this offers great value for

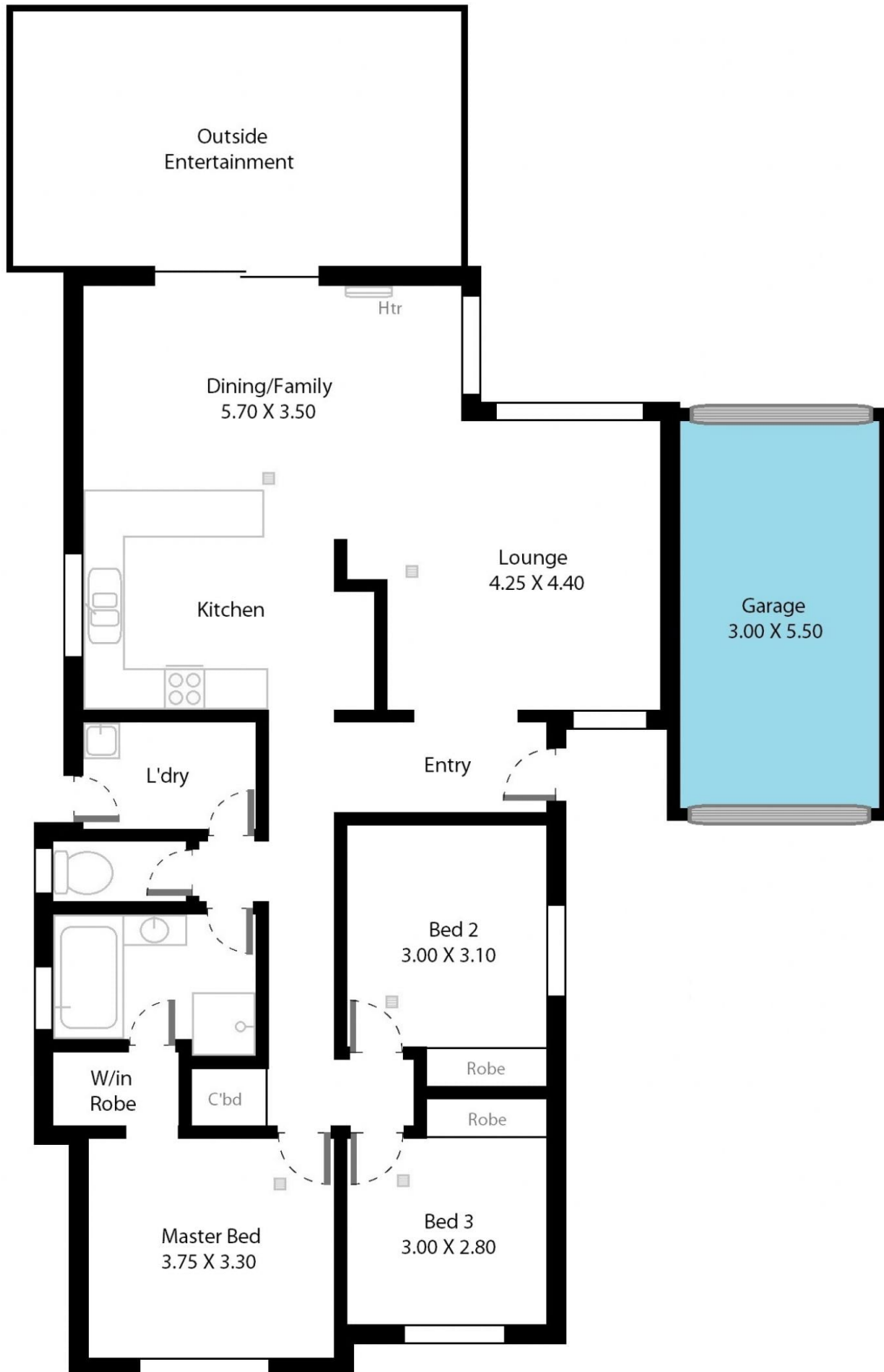
[For full version visit the website](https://www.magain.com.au/property/28-shillabeer-crescent-woodcroft-sa/8437256)

Type : House
Building Size : 15 sqm
Land Size : 450 sqm
View : <https://www.magain.com.au/property/28-shillabeer-crescent-woodcroft-sa/8437256>



Zoe Ball
08 8381 6000

28 Shillabeer Crescent Woodcroft, South Australia.



Picture intended as a reference only. Any specific measurements required should be obtained by an independent surveyor.